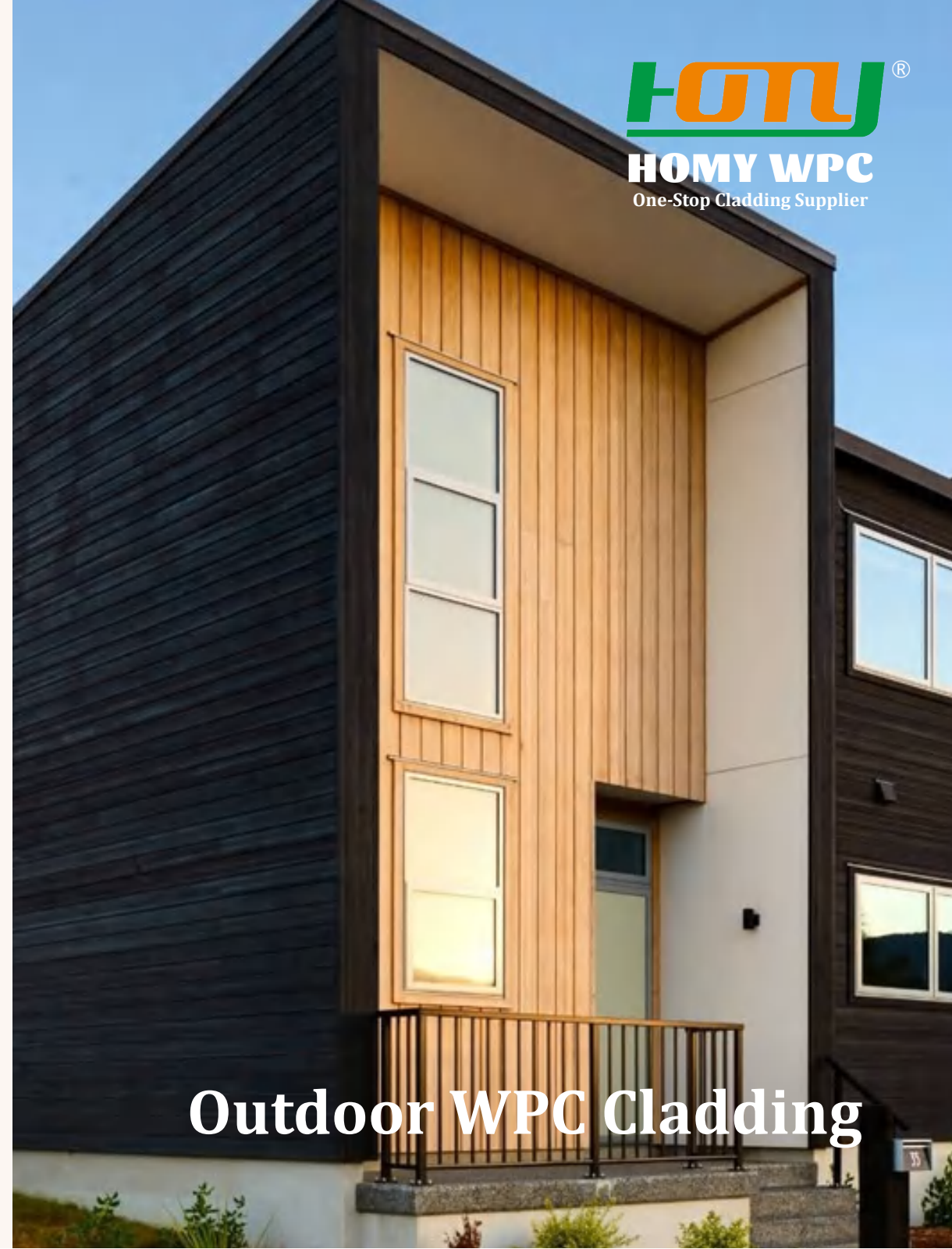




**HOMY WPC**  
One-Stop Cladding Supplier



**Outdoor WPC Cladding**

# What is WPC ?

WPC (Wood Plastic Composite) is extruded thermoplastic composite made of polyethylene and natural wood fiber. Wood plastic composite is more environmentally friendly and requires less maintenance than the alternatives of solid wood. WPC is resistant to cracking and splitting, it is a material that can be molded with or without simulated wood grain details.



### Strength and Durability

Unlike timber, our boards retain their strength and durability throughout their life.



### No Rotting or Warping

A unique material composition resistant to the damaging effects of moisture build-up.



### Eco-Friendly

A long-lasting material composed of a blend of recycled plastic and wood fibres.



### No Splintering

The material composition ensures long-term safety and assurance.



### 25 Year Residential Warranty

High-quality, long-lasting products with a 25-year warranty.



### Very Low Maintenance

All our boards are hard-wearing and easy to maintain.

## Outdoor WPC Wall Cladding Collections

Collection	Pictures	Model Drawing	Size
Homy Classic			148/156*21mm Valid Width: 125/135mm
Homy 3D Wood Grain			148/156*21mm Valid Width: 125/135mm
Homy 3D Embossed			148/156*21mm Valid Width: 125/135mm
Homy Co-extrusion			156*21mm Valid Width: 135mm
Homy Fluted			169*28mm Valid Width: 149mm
			220*26mm Valid Width: 200mm
Homy Co-extrusion Fluted			169*28mm Valid Width: 150mm
			220*26mm Valid Width: 200mm
Homy Co-extrusion Advanced			195*25mm Valid Width: 185mm



## HOMY Classic Cladding

With the design of sanded surface, it's elegantly styled and highly slip-resistant, meanwhile, it's barefoot friendly and easy to clean.

Surface Treatment	Sanded
Raw Material	32% HDPE, 58% Wood Fiber, 10% Chemical Additives
Size	148*21mm, 156*21mm
Length	2200mm, 2800mm, 2900mm or Customized
Color	Black, Red Wood, Walnut, Light Grey, Teak, Coffee
Recycling	100% recyclable
Applications	Supermarket, Villa, Outdoor Wall, Cottage House, Swimming Pool, Outdoor Garden, etc.

## Finished Cladding Colors



HMN-101: Coffee01



HMN-004: Teak 01



HMN-011: Black



HMN-100: Walnut



HMN-001: Red Wood



HMN-008: Light Grey





# HOMY 3D Wood Grain Cladding

3D Wood Grain Surface takes inspiration from real wood textures. It looks like timber but performs far beyond what people would expect.

Surface Treatment	3D Wood Grain
Raw Material	32% HDPE, 58% Wood Fiber, 10% Chemical Additives
Size	148*21mm, 156*21mm
Length	2200mm, 2800mm, 2900mm or Customized
Color	Black, Red Wood, Walnut, Light Grey, Teak, Coffee
Recycling	100% recyclable
Applications	Supermarket, Villa, Outdoor Wall, Cottage House, Swimming Pool, Outdoor Garden, etc.

## Finished Cladding Colors



HMN-008: Light Grey



HMN-001: Red Wood



HMN-100: Walnut



HMN-011: Black



HMN-101: Coffee01



HMN-004: Teak 01





# HOMY 3D Embossed Cladding

3D Embossed WPC cladding has a very realistic wood natural appearance. Its plastic crust is hard and it's not easy to be scratched.

Surface Treatment	3D Embossed
Raw Material	32% HDPE, 58% Wood Fiber, 10% Chemical Additives
Size	148*21mm, 156*21mm
Length	2200mm, 2800mm, 2900mm or Customized
Color	Black, Red Wood, Walnut, Light Grey, Teak, Coffee
Recycling	100% recyclable
Applications	Supermarket, Villa, Outdoor Wall, Cottage House, Swimming Pool, Outdoor Garden, etc.

## Finished cladding Colors



HMN-001: Red Wood



HMN-011: Black



HMN-008: Light Grey



HMN-004: Teak 01



HMN-100: Walnut



HMN-101: Coffee 01





# HOMY Co-extrusion Cladding

Co-extrusion WPC cladding are a lot more attractive, exceptionally durable in exterior weather conditions and highly resistant to fading and scratching.

Surface Treatment	3D Embossed, Wire-brushed
Raw Material	32% HDPE, 58% Wood Fiber, 10% Chemical Additives
Size	156*21mm
Length	2200mm, 2800mm, 2900mm or Customized
Color	Charcoal, Rosewood, Old Wood, Teak, Light Grey, New Mahogany, Maple, Pale
Recycling	100% recyclable
Applications	Supermarket, Villa, Outdoor Wall, Cottage House, Swimming Pool, Outdoor Garden, etc.

## Finished Cladding Colors



HMC-002: Rosewood

HMC-007: Maple

HMC-001: Charcoal

HMC-005: Light Grey



HMC-004: Teak 01

HMC-006: NEW Mahogany

HMN-003:Old Wood

HMN-008:Light Grey



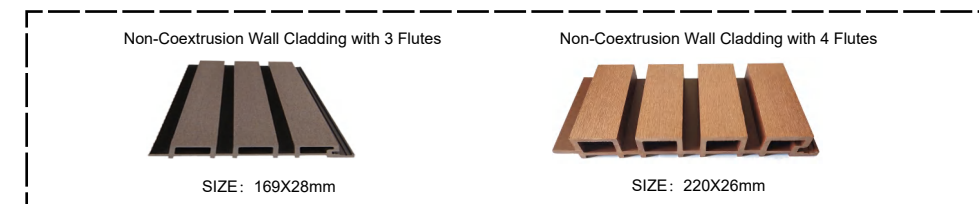


# HOMY Fluted Cladding

Our fluted cladding can be with 3 flutes or 4 flutes and can be made with sanded or wood grain or 3D Embossed surface and has a three-dimensional effect.

Surface Treatment	Sanded, 3D Wood Grain, 3D Embossed
Raw Material	32% HDPE, 58% Wood Fiber, 10% Chemical Additives
Size	169*28mm, 220*26mm
Length	2200mm, 2800mm, 2900mm or Customized
Color	Black, Red Wood, Walnut, Light Grey, Teak, Coffee
Recycling	100% recyclable
Applications	Supermarket, Villa, Outdoor Wall, Cottage House, Swimming Pool, Outdoor Garden, etc.

## Types Available



## Finished Cladding Colors



HMN-001: Red Wood



HMN-008: Light Grey



HMN-100: Walnut



HMN-004: Teak 01



HMN-011: Black



HMN-101: Coffee 01





# HOMY Co-extrusion Fluted Cladding

Co-extrusion fluted cladding is capped by outer shield and also can be with 3 or 4 flutes. It combines the fluted and co-extrusion effect, which can show an outstanding performance.

Surface Treatment	Wire-brushed
Raw Material	32% HDPE, 58% Wood Fiber, 10% Chemical Additives
Size	169*28mm, 220*26mm
Length	2200mm, 2800mm, 2900mm or Customized
Color	Charcoal, Rosewood, Old Wood, Teak, Light Grey, New Mahogany, Maple, Pale
Recycling	100% recyclable
Applications	Supermarket, Villa, Outdoor Wall, Cottage House, Swimming Pool, Outdoor Garden, etc.

## Types Available

Coextrusion Wall Cladding with 3 Flutes

SIZE: 169X28mm

Coextrusion Wall Cladding with 4 Flutes

SIZE: 220X26mm

## Finished Cladding Colors

HMC-001: Charcoal

HMC-002: Rosewood

HMC-003: Old Wood

HMC-004: Teak01

HMC-006: New mahogany

HMC-007: Maple

HMC-008: Pale

HMC-005: Ligh Grey





# HOMY Co-extrusion Advanced Cladding

Co-extrusion advanced cladding is with 5 flutes and more attractive than 4 fluted cladding.

Surface Treatment	Wire-brushed
Raw Material	32% HDPE, 58% Wood Fiber, 10% Chemical Additives
Size	195*25mm
Length	2200mm, 2800mm, 2900mm or Customized
Color	Charcoal, Rosewood, Old Wood, Teak, Light Grey, New Mahogany, Maple, Pale
Recycling	100% recyclable
Applications	Supermarket, Villa, Outdoor Wall, Cottage House, Swimming Pool, Outdoor Garden, etc.

## Finished Cladding Colors



HMC-006: New Mahogany



HMC-005: Light Grey



HMC-007: Maple



HMC-008: Pale



HMC-001: Charcoal



HMC-002: Rosewood



HMC-004: Teak 01



HMC-003: Old Wood

# Installation Effects



# Accessories & Tools



Wall Cladding



L Corner



Joist



Starter Clip



Srew



Expansion Screw



Chainsaw



Tap measure



Rubber hammer



Electric drill

# Installation Process

Fixed joist

Fixd Starting clip

1. Fix the joist

2. Fix the starting clips

Fixd wall cladding

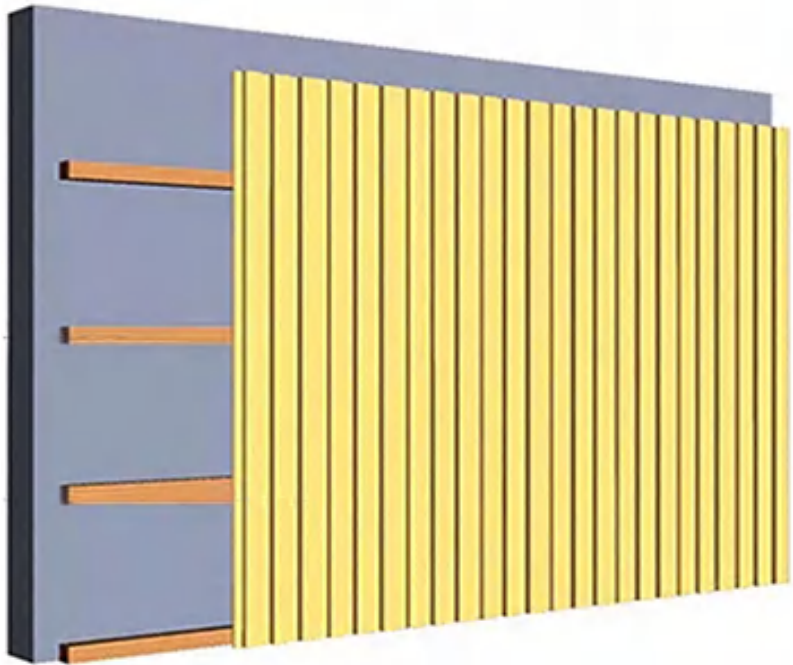
Install L Corner

3. Fix the wall cladding

4. Install the L-Corner



# Installation Effects



# Accessories & Tools



Wall Cladding



L Corner



Joist



Starter Clip



Srew



Expansion Screw



Chainsaw



Tap measure

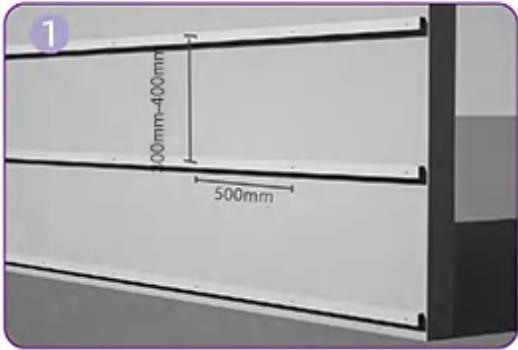


Rubber hamrr



Electric drill

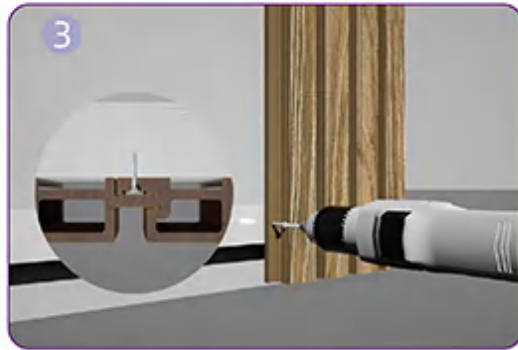
# Installation Process



First, fix the joists at a 300mm - 400mm interval to the wall with expansion screws. The spacing between two adjacent screws should be 500mm.



Fix the first piece of wall cladding board on the joists with colored screws. Note that the screws should be installed in the slot of the tongue.



Secure the cladding board completely by using self-drilling screws to fix it to the joists, The screws should be installed in the slot of the tongue.



Join the second piece of cladding board to the first one. Fix it to the joists with self-drilling screws.



To properly finish the corner, the joists are to be flush with each other respectively and fix them with screws.



Finish the installation by getting the rest installed in the same manner.