



FIND US ON



Read All Section Before You Install

To get latest information, please visit our website: www.homywpc.com

These installation guidelines will direct you through the process of installing HOMY products. These installation methods are recommended by HOMY, but they may not cover every installation scenario you may encounter. Since each installation is unique in its performance requirements, the ultimate installation method used is the sole responsibility of the installer. HOMY recommends that all designs be reviewed by a licensed architect, engineer or local building official before installation. Make sure your plans meet local building codes before you begin the installation.

Safety

Appropriate safety equipment is necessary when you deal with any type of construction project. HOMY highly recommends, but is not limited to the following safety equipment: gloves, a respiratory protection/long sleeves, pants, and safety glasses.

Planning Ahead

To determine how much HOMY cladding material you will need, start by calculating the square footage of your wall surface by multiplying length by width. When calculating the amount of cladding you will need, it is recommended that you add roughly 10% to the total for a scrap factor. A layout for your cladding should be planned before starting installation to ensure the best possible looking cladding for your project. Building codes and zoning ordinances generally apply to permanent structures, meaning anything that's anchored to the ground or attached to the house. So nearly every kind of cladding requires permits and inspections from a local building department. We recommend drawing out a site plan of your proposed project that you intend to do to minimize errors and make your perfect wall cladding.

Expansion and Contraction

HOMY cladding planks will experience expansion and contraction with changes in temperature. Expansion and contraction are most significant where extreme temperature changes occur. Changes in length are most significant during the installation process, and should be taken into account if working in extreme temperatures. A good example would be cutting your planks during a hot afternoon, letting them sit outside overnight in the cool air and then installing them the next morning, and you will notice a certain amount of contraction. The best way to minimize this problem is to fasten your planks after cutting as soon as possible.

01 **HOMY WPC**

Read All Section Before You Install

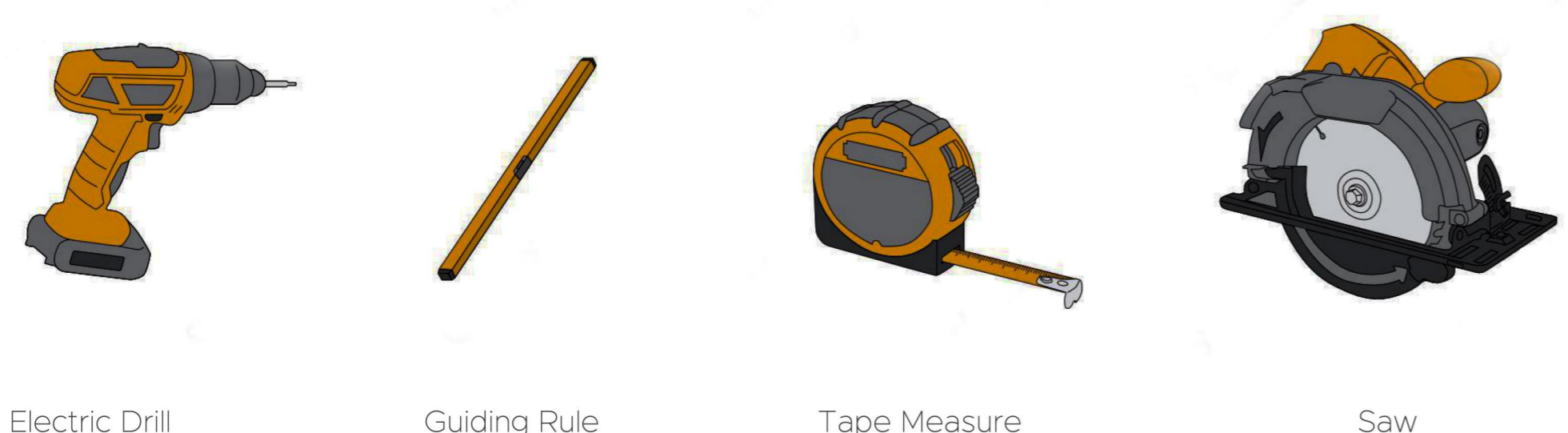
To get latest information, please visit our website: www.homywpc.com

Environment

You need a clean, smooth, flat and strong surface to install HOMY products. Make sure your plans meet local building codes before installing any type of cladding if installation is not that urgent.

Tools

The tools you need for this installation are illustrated below:

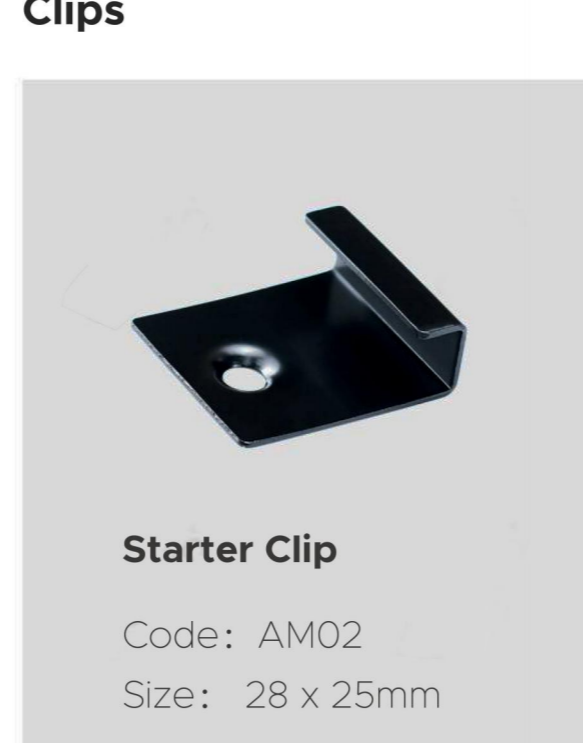


Electric Drill Guiding Rule Tape Measure Saw

Note

- The trims we provide are not indispensable. You can determine your own trims according to your preference.
- Joists must be installed before installing cladding in order to ensure safety.
- Pre-drill by electric drill on wpc boards at every exact location where screws should be fixed.
- Screws are required for every connection of cladding. It is recommended that more screws should be prepared.

Clips

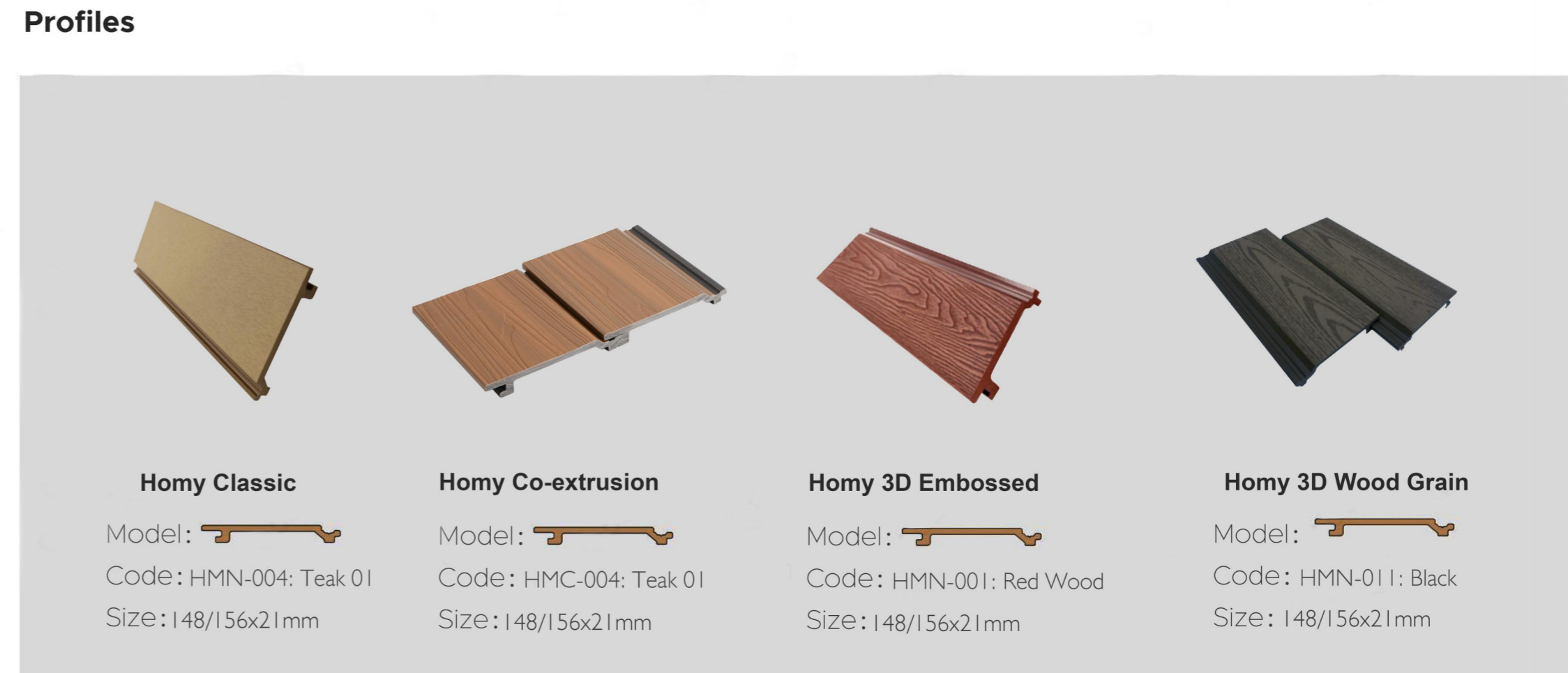


Starter Clip
Code: AM02
Size: 28 x 25mm

Read All Section Before You Install

To get latest information, please visit our website: www.homywpc.com

Profiles



Homy Classic
Model: HMIN-004: Teak 01
Size: 148/156x21mm

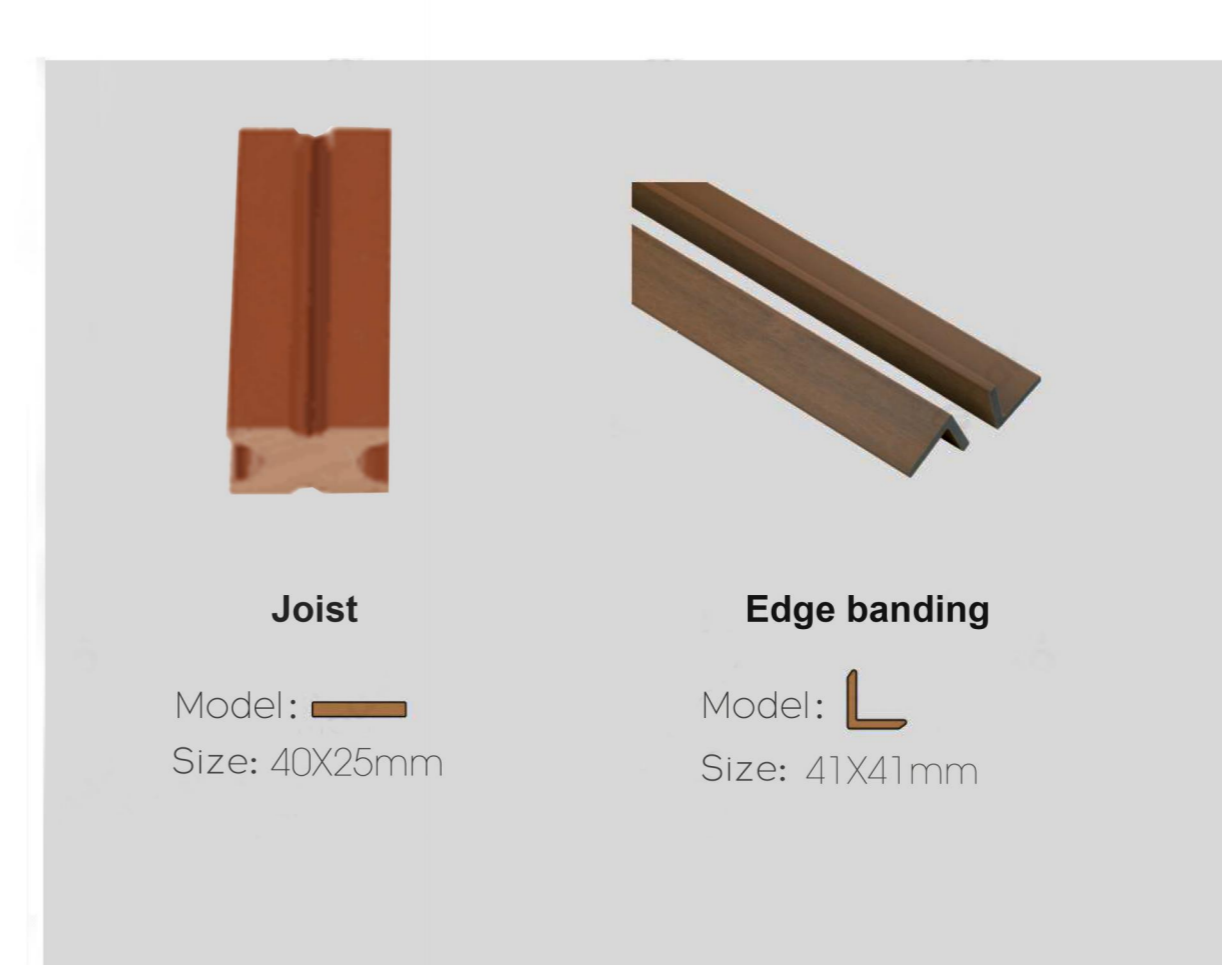
Homy Co-extrusion
Model: HMC-004: Teak 01
Size: 148/156x21mm

Homy 3D Embossed
Model: HMIN-001: Red Wood
Size: 148/156x21mm

Homy 3D Wood Grain
Model: HMIN-011: Back
Size: 148/156x21mm

Trim

Note: You can determine your own accessories according to your preference.



Joist
Model: J-001
Size: 40x25mm

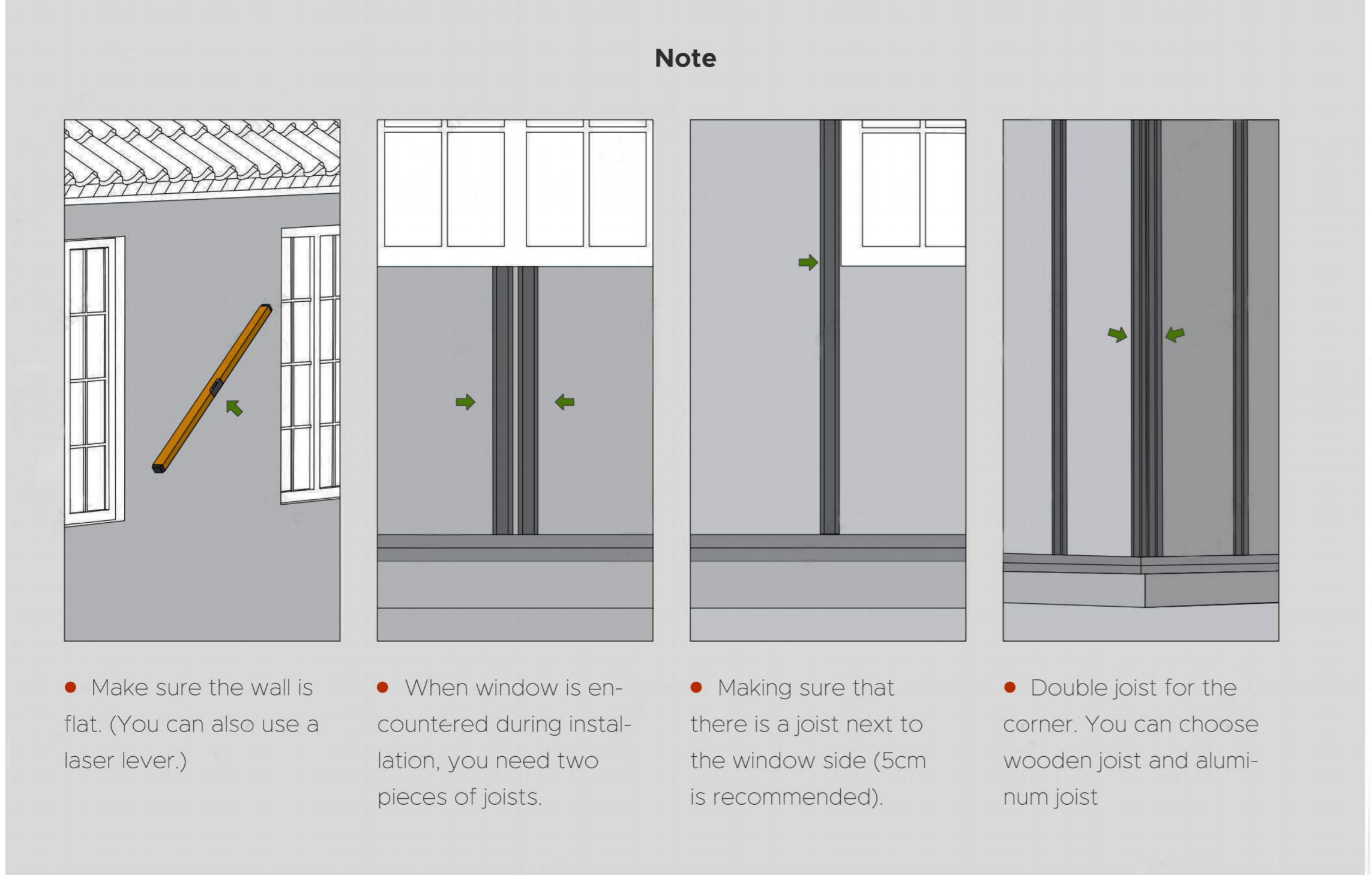
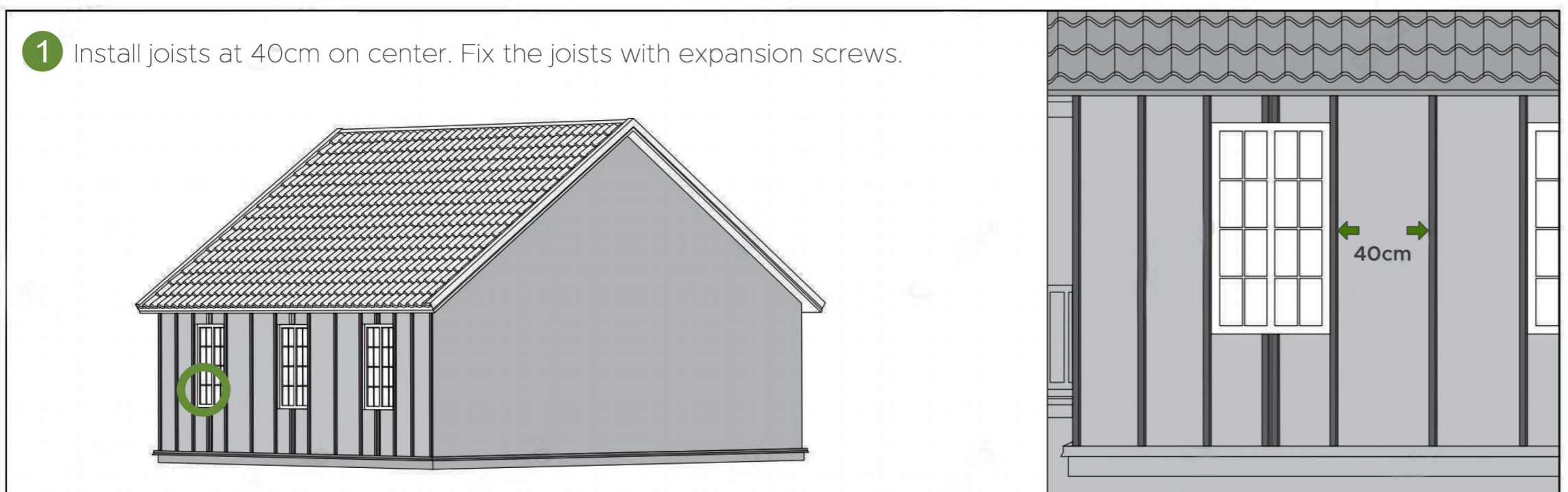
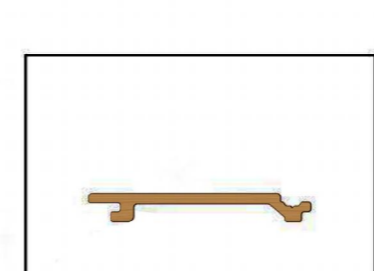
Edge banding
Model: E-001
Size: 41x41mm

02 **HOMY WPC**

03 **HOMY WPC**

HOMY Cladding Installation Instructions

NOTE: Homy Flat Wall Cladding shown as below

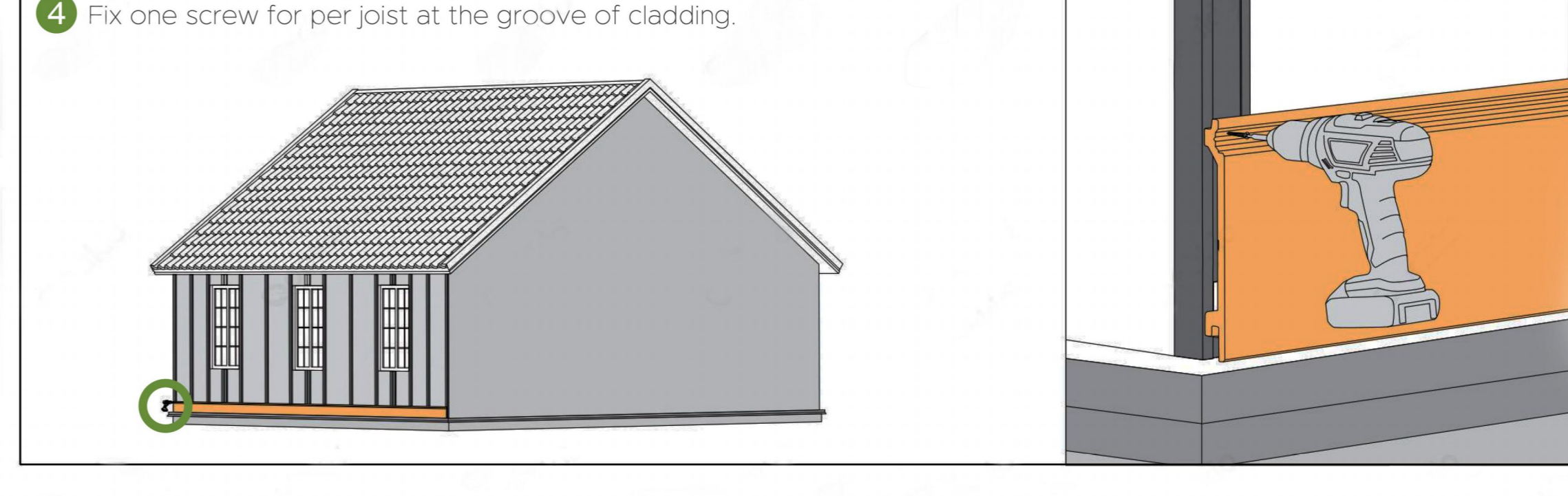
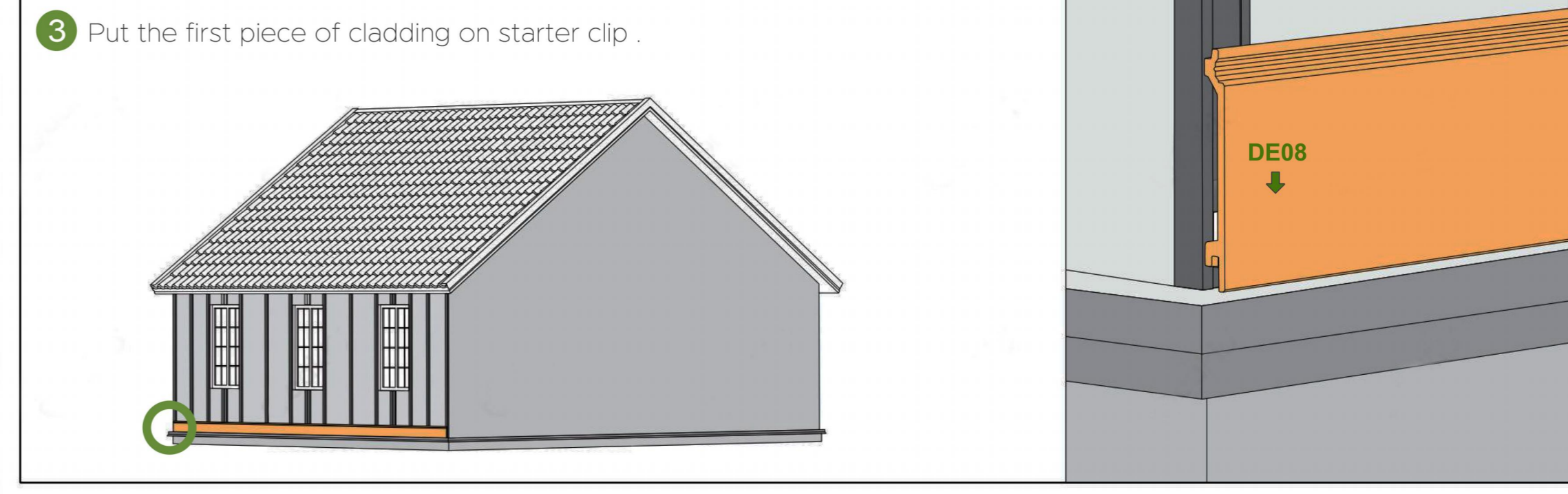
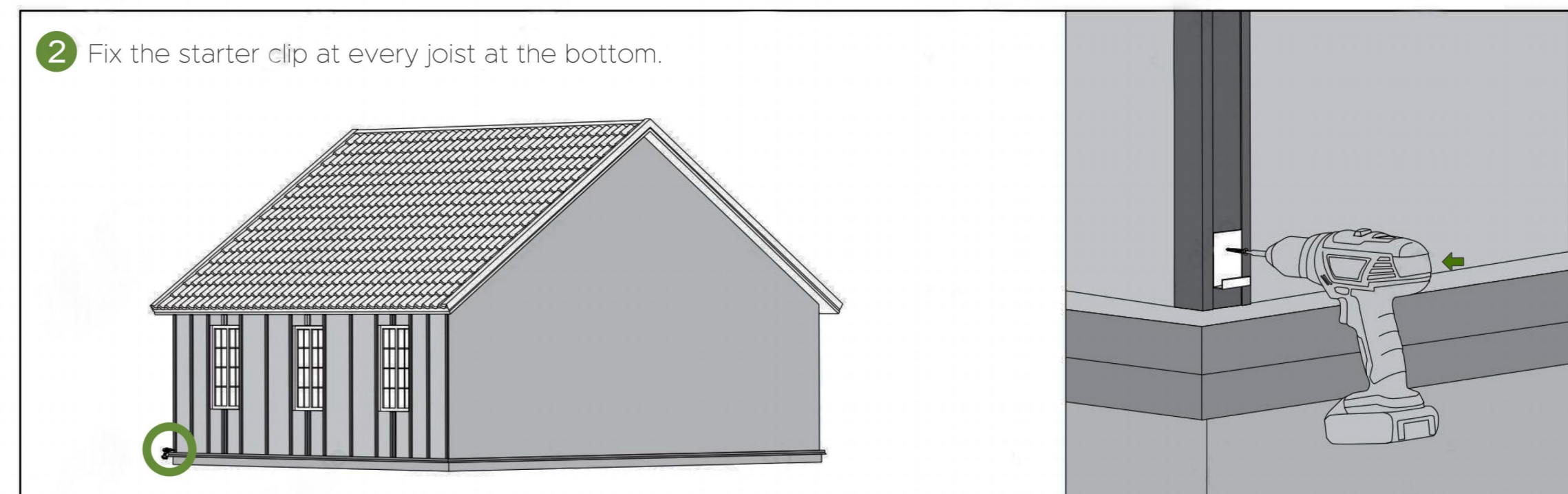
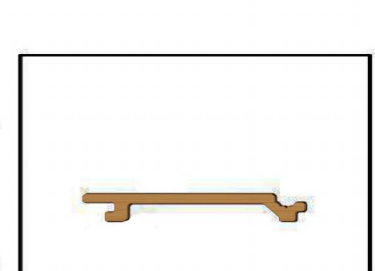


04 **HOMY WPC**

Note: Before fixing by screws, pre-drill at the exact location for screws with electric drill.

HOMY Cladding Installation Instructions

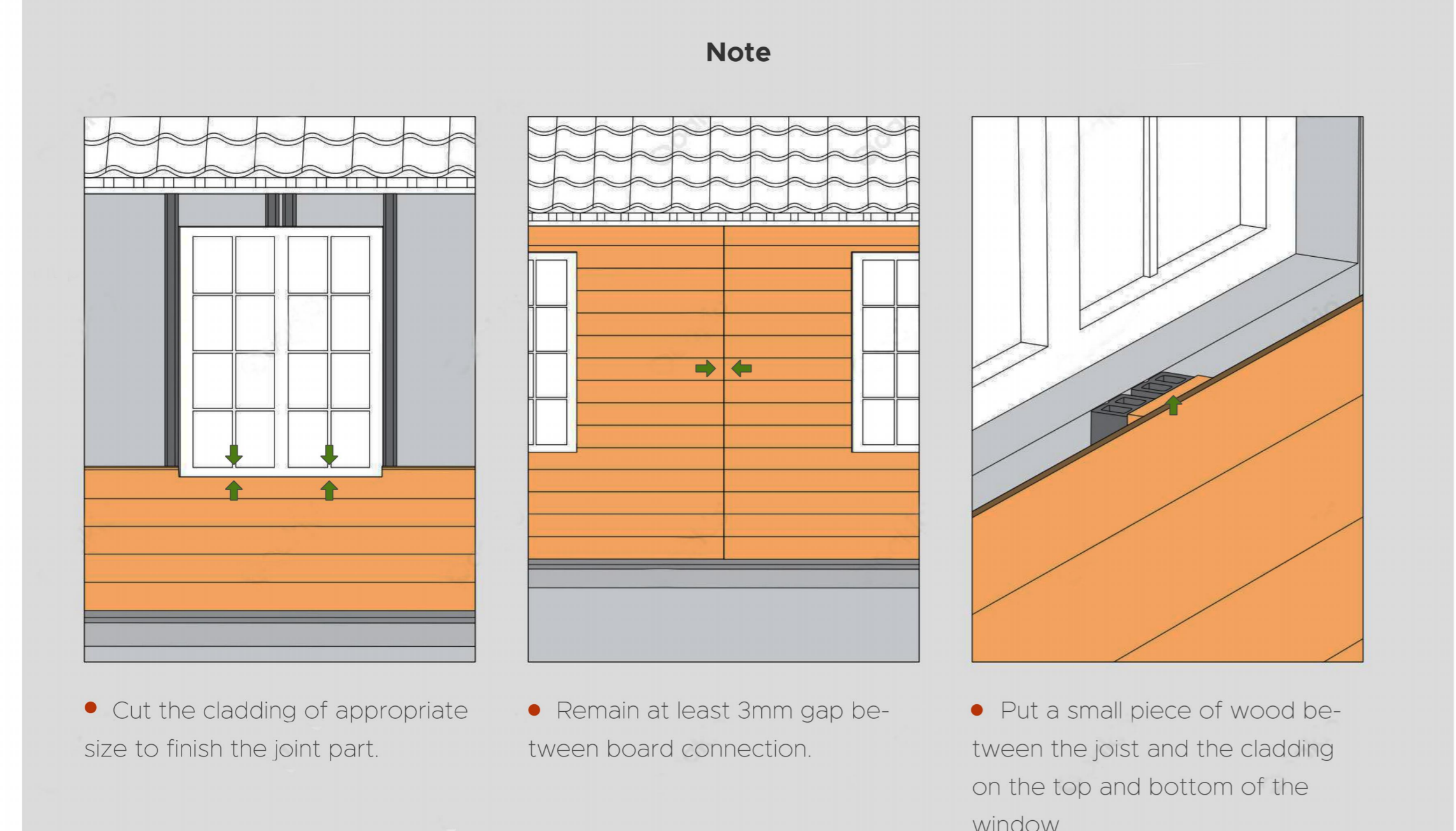
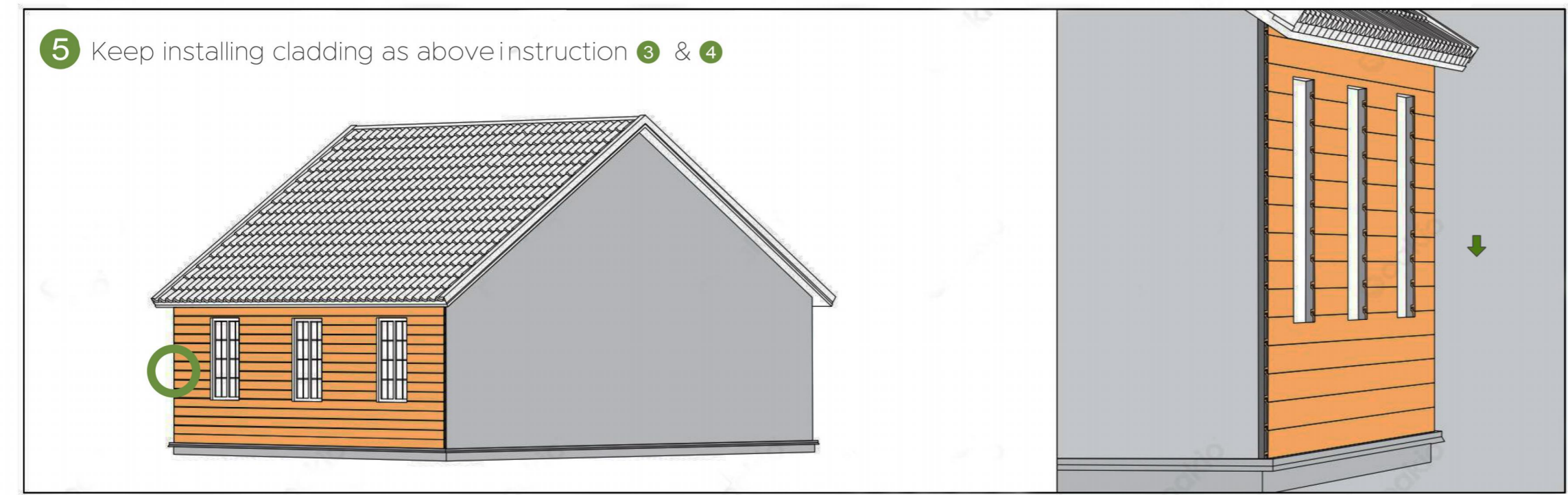
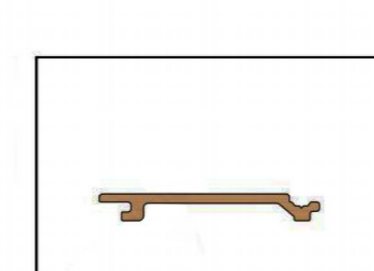
NOTE: Homy Flat Wall Cladding shown as below



05 **HOMY WPC**

HOMY Cladding Installation Instructions

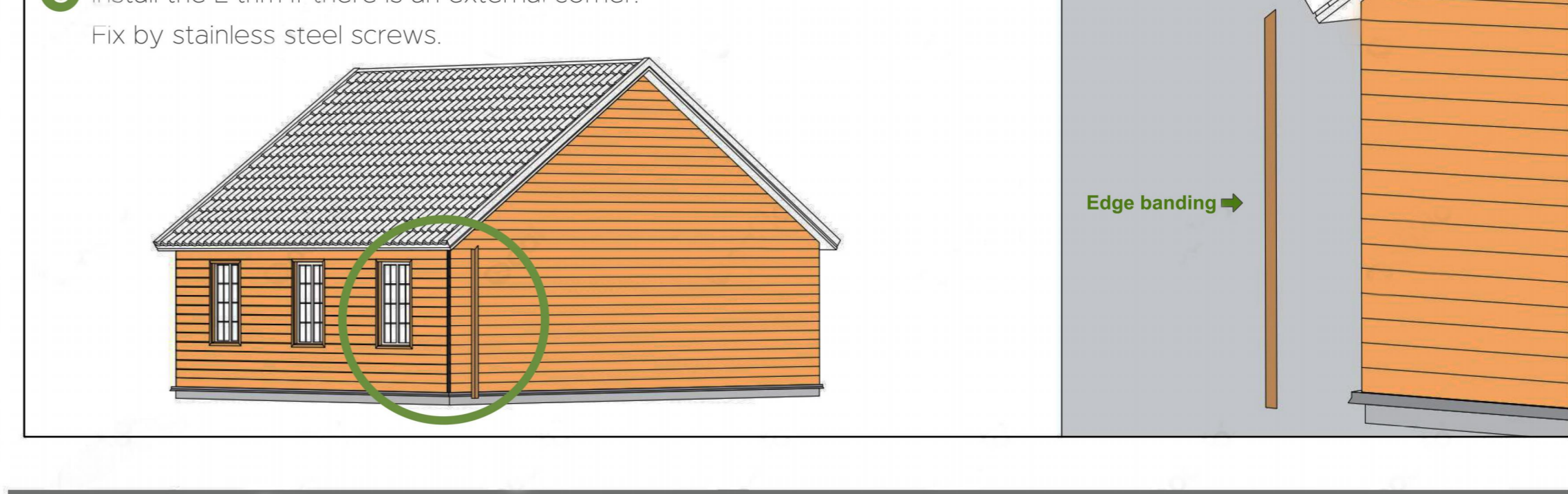
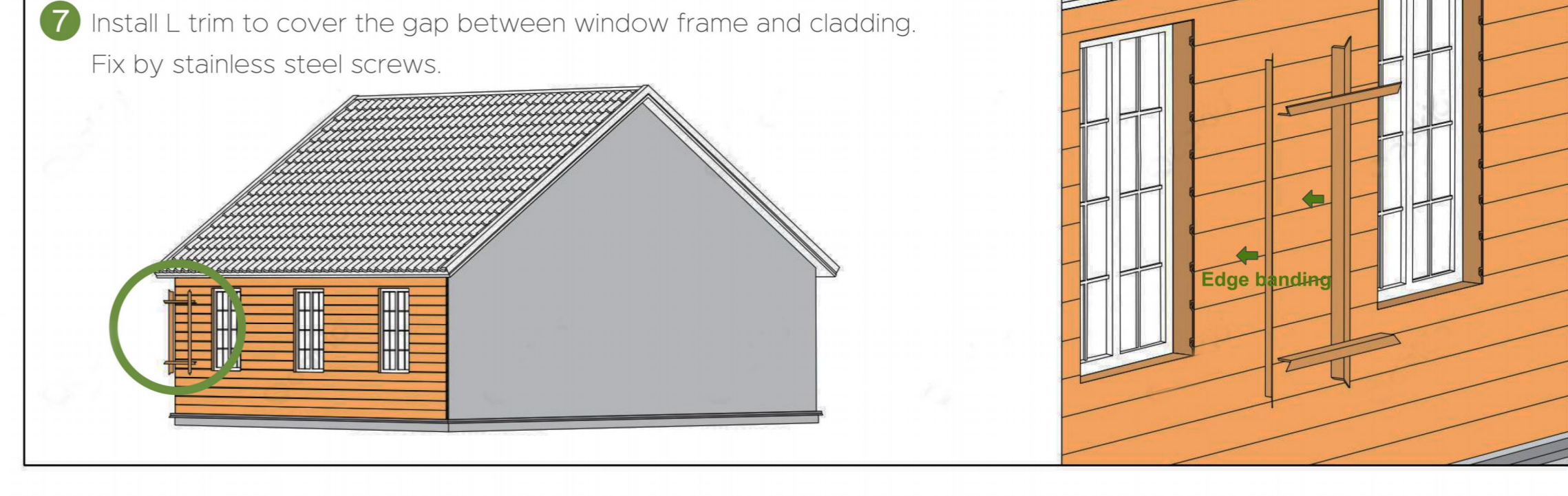
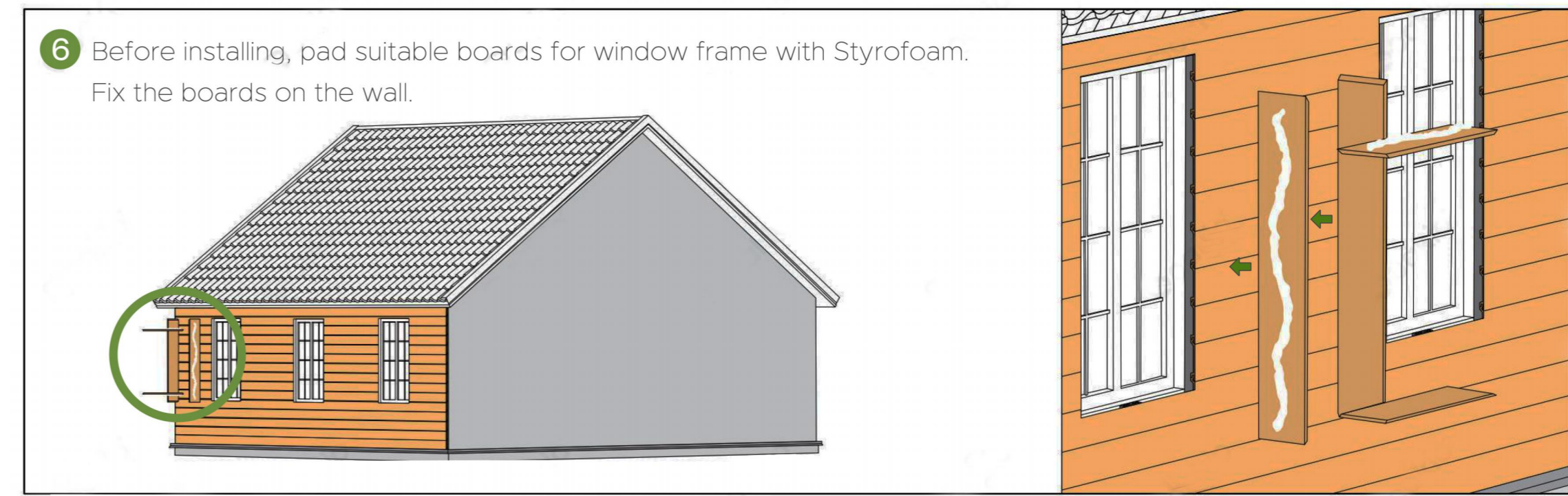
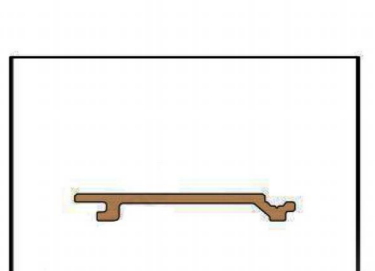
NOTE: Homy Flat Wall Cladding shown as below



06 **HOMY WPC**

HOMY Cladding Installation Instructions

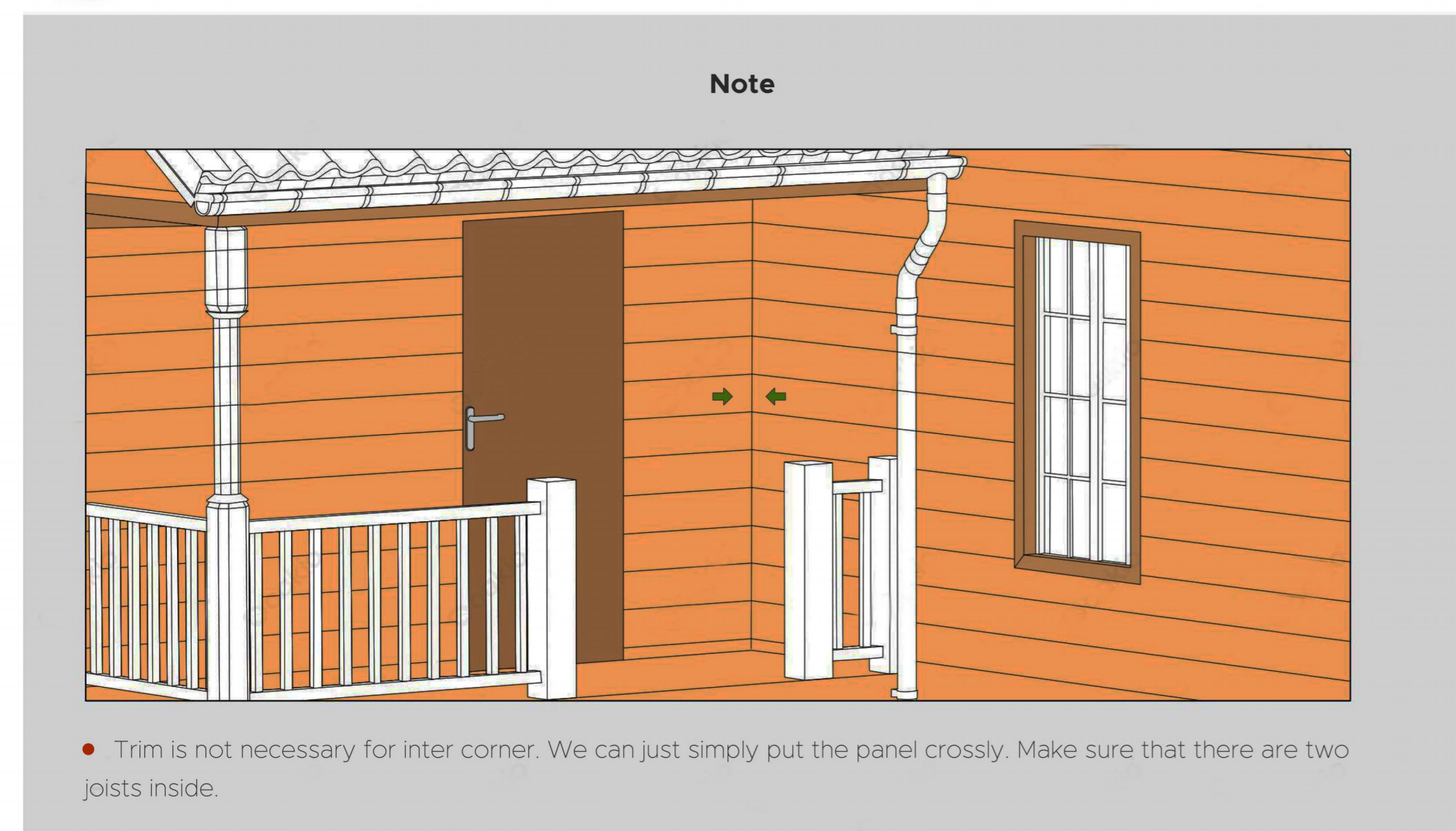
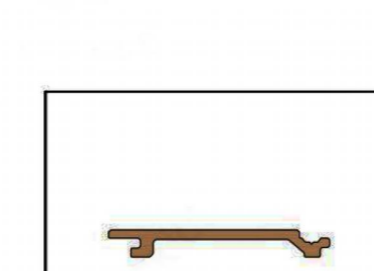
NOTE: Homy Flat Wall Cladding shown as below



07 **HOMY WPC**

HOMY Cladding Installation Instructions

NOTE: Homy Flat Wall Cladding shown as below



08 **HOMY WPC**