

Read All Section Before You Install

To get latest information, please visit our website: www.homywpc.com

These installation guidelines will direct you through the process of installing HOMY products. These installation methods are recommended by HOMY, but they may not cover every installation scenario you may encounter. Since each installation is unique in its performance requirements, the ultimate installation method used is the sole responsibility of the installer. HOMY recommends that all designs be reviewed by a licensed architect, engineer or local building official before installation. Make sure your plans meet local building codes before you begin the installation.

Safety

Appropriate safety equipment is necessary when you deal with any type of construction project. HOMY highly recommends, but is not limited to the following safety equipment: gloves, a respiratory protection, long sleeves, pants, and safety glasses.

Planning Ahead

To determine how much HOMY panel material you will need, start by calculating the square footage of your wall surface by multiplying length by width. When calculating the amount of panel you will need, it is recommended that you add roughly 10% to the total for a scrap factor. A layout for your panel should be planned before starting installation to ensure the best possible looking panel for your project. Building codes and zoning ordinances generally apply to permanent structures, meaning anything that's anchored to the ground or attached to the house. So nearly every kind of panel requires permits and inspections from a local building department. We recommend drawing out a site plan of your proposed project that you intend to do to minimize errors and make your perfect wall panel.

Expansion and Contraction

HOMY panel planks will experience expansion and contraction with changes in temperature. Expansion and contraction are most significant where extreme temperature changes occur. Changes in length are most significant during the installation process, and should be taken into account if working in extreme temperatures. A good example would be cutting your planks during a hot afternoon, letting them sit outside overnight in the cool air and then installing them the next morning, and you will notice a certain amount of contraction. The best way to minimize this problem is to fasten your planks after cutting as soon as possible.

01



Read All Section Before You Install

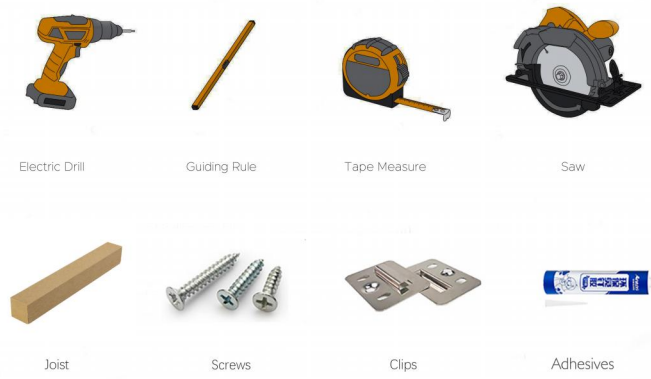
To get latest information, please visit our website: www.homywpc.com

Environment

You need a clean, smooth, flat and strong surface to install HOMY products. Make sure your plans meet local building codes before installing any type of plans if installation is not that urgent.

Tools & Accessories

The tools you need for this installation are illustrated below:



Read All Section Before You Install

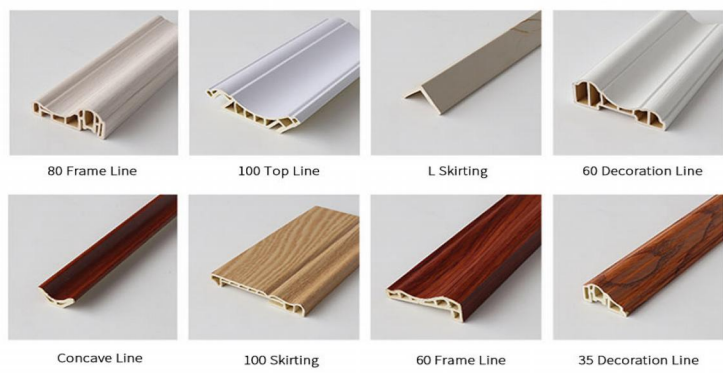
To get latest information, please visit our website: www.homywpc.com

Profiles



Accessories

Note: You can determine your own accessories according to the installation area.



02

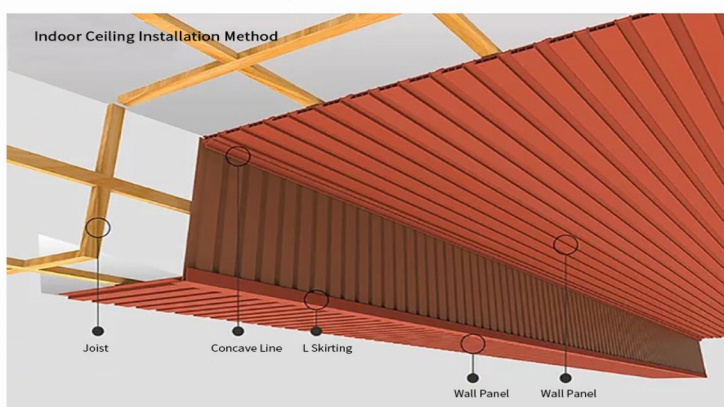


03



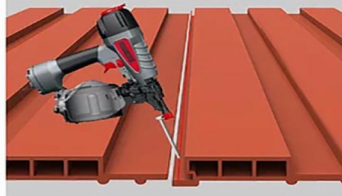
Installation Process

1.First Installation Method: Using Joist



- 1.Install the joist
Install the joists on the walls and make sure the distance between joist is within 30-40cm and all joists are on the same level.
- 2.Install Panels Vertically and Horizontally
Install the panels on the joists in turn.

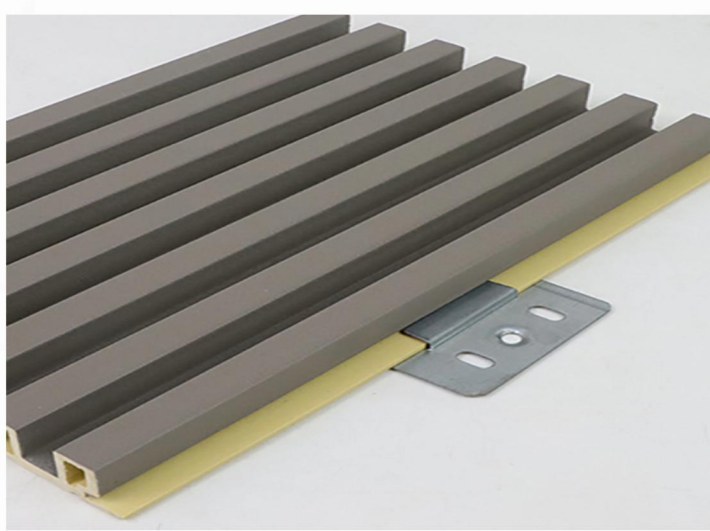
3.Fix Panels with Screws
Please fix the screws with air gun in the places shown in pictures.



04



2.Second Installation Method: Using Clips



Installation Process

- 1.WPC wall panels are installed with clips when the wall is flat.
- 2.pcs of clips are needed for 1 meter of wall panels.
- 3.Adhesives can be made on the back of the panels to make the panels more stable.
- 4.Any of nail-free adhesives, glass adhesives and structural adhesives is ok.

05



Final Installation Effect



06



07

