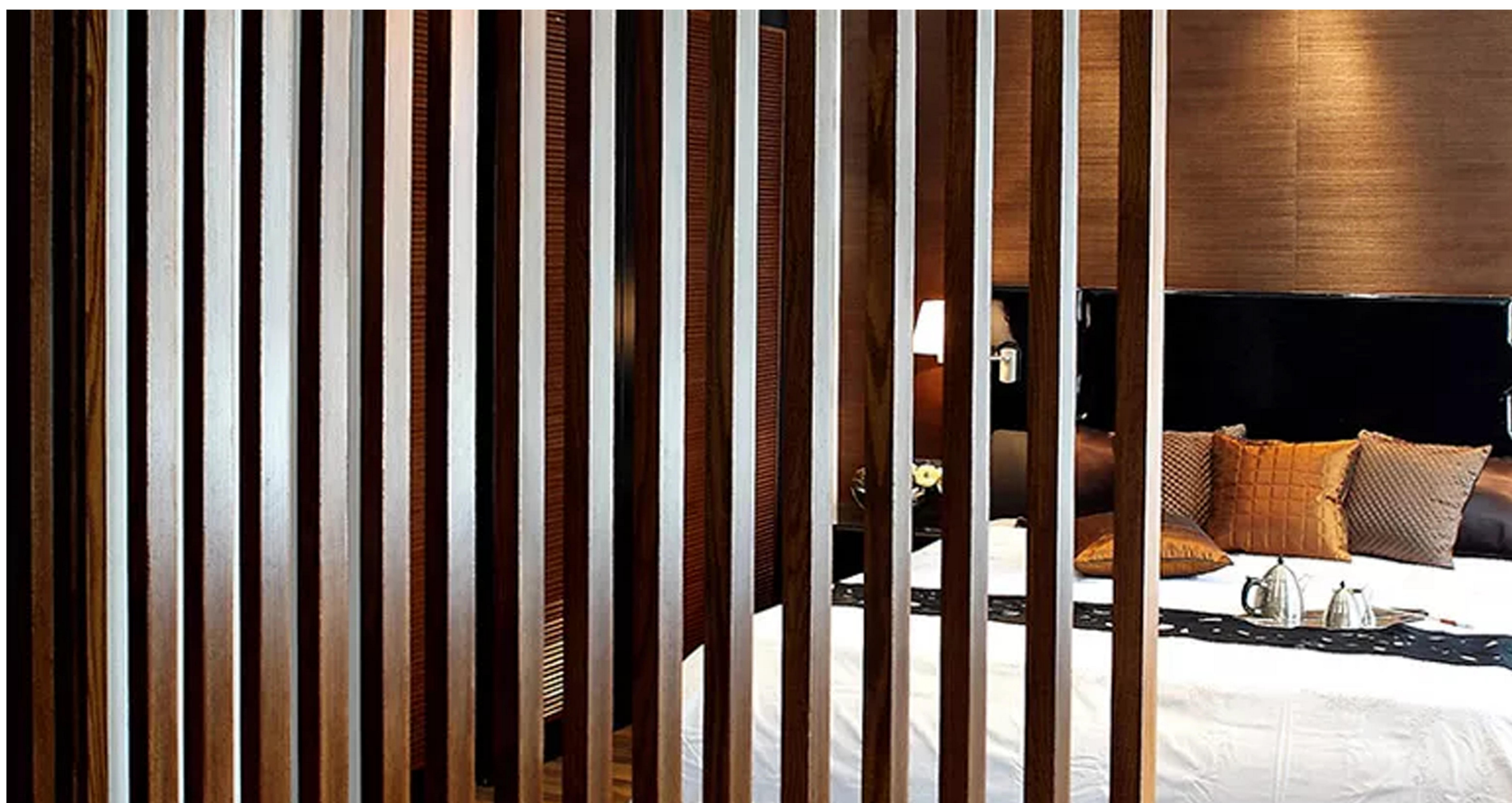


INDOOR WPC TIMBER

Installation Guide



Read All Section Before You Install

To get latest information, please visit our website: www.homywpc.com

These installation guidelines will direct you through the process of installing HOMOY products. These installation methods are recommended by HOMOY, but they may not cover every installation scenario you may encounter. Since each installation is unique in its performance requirements, the ultimate installation method used is the sole responsibility of the installer. HOMOY recommends that all designs be reviewed by a licensed architect, engineer or local building official before installation. Make sure your plans meet local building codes before you begin the installation.

Safety

Appropriate safety equipment is necessary when you deal with any type of construction project. HOMOY highly recommends, but is not limited to the following safety equipment: gloves, a respiratory protection, long sleeves, pants, and safety glasses.

Planning Ahead

To determine how much HOMOY timber material you will need, start by calculating the square footage of your wall surface by multiplying length by width. When calculating the amount of timber you will need, it is recommended that you add roughly 10% to the total for a scrap factor. A layout for your timber should be planned before starting installation to ensure the best possible looking timber for your project. Building codes and zoning ordinances generally apply to permanent structures meaning anything that's anchored to the ground or attached to the house. So nearly every kind of timber requires permits and inspections from a local building department. We recommend drawing out a site plan of your proposed project that you intend to do to minimize errors and make your perfect wall timber.

01



Read All Section Before You Install

To get latest information, please visit our website: www.homywpc.com

Environment

You need a clean, smooth, flat and strong surface to install HOMOY products. Make sure your plans meet local building codes before installing any type of timber if installation is not that urgent.

Tools & Accessories

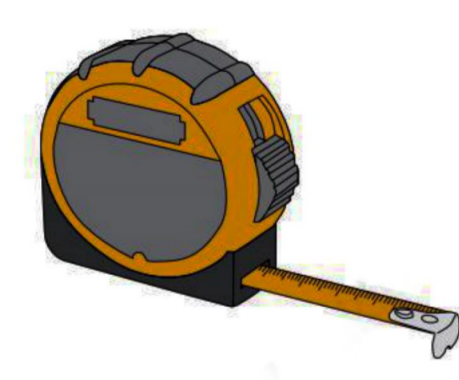
The tools you need for this installation are illustrated below:



Electric Drill



Guiding Rule



Tape Measure



Saw

Accessories



Wood Block



Nail-free Adhesive



Saw

Read All Section Before You Install

To get latest information, please visit our website: www.homywpc.com



1. Fix the wood blocks in equal distance on the top.



2. Fix the bottom of the timbers by putting the wood blocks in the timbers and then fixing the blocks and timber together by nail-free adhesive.



3. Fixing the timber and wood blocks on the top.



4. Finishing Timber Installation.

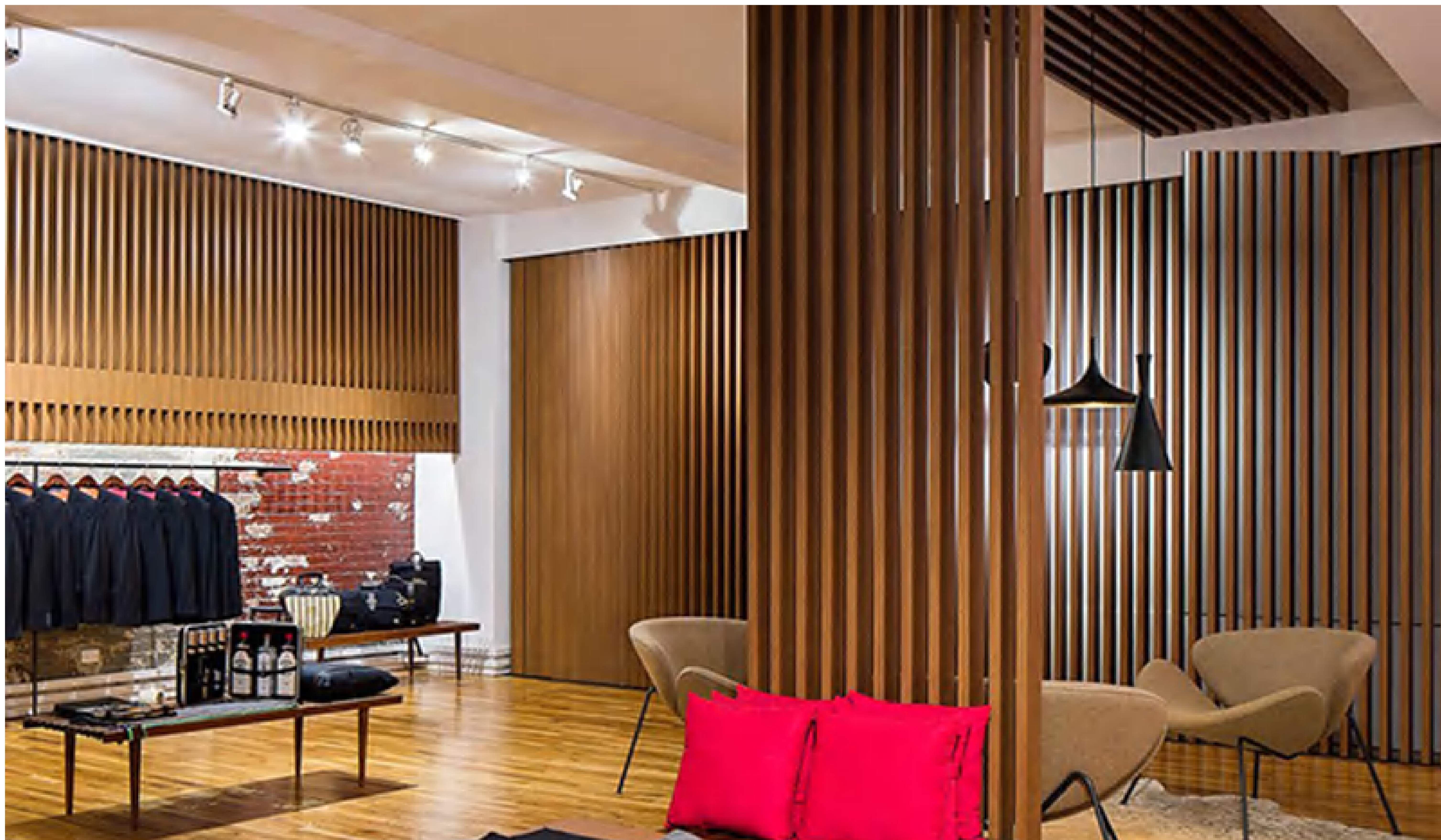
02



03



Final Installation Effect



04



05

