

## Read All Section Before You Install

To get latest information, please visit our website: [www.homywpc.com](http://www.homywpc.com)

These installation guidelines will direct you through the process of installing HOMY products. These installation methods are recommended by HOMY, but they may not cover every installation scenario you may encounter. Since each installation is unique in its performance requirements, the ultimate installation method used is the sole responsibility of the installer. HOMY recommends that all designs be reviewed by a licensed architect, engineer or local building official before installation. Make sure your plans meet local building codes before you begin the installation.

### Safety

Appropriate safety equipment is necessary when you deal with any type of construction project. HOMY highly recommends, but is not limited to the following safety equipment: gloves, a respiratory protection, long sleeves, pants, and safety glasses.

### Planning Ahead

To determine how much HOMY moulding material you will need, start by calculating the square footage of your wall surface by multiplying length by width. When calculating the amount of moulding you will need, it is recommended that you add roughly 10% to the total for a scrap factor. A layout for your moulding should be planned before starting installation to ensure the best possible locking moulding for your project. Building codes and zoning ordinances generally apply to permanent structures, meaning anything that's anchored to the ground or attached to the house. So nearly every kind of timber requires permits and inspections from a local building department. We recommend drawing out a site plan of your proposed project that you intend to do to minimize errors and make your perfect wall moulding.

### Expansion and Contraction

HOMY moulding planks will experience expansion and contraction with changes in temperature. Expansion and contraction are most significant where extreme temperature changes occur. Changes in length are most significant during the installation process, and should be taken into account if working in extreme temperatures. A good example would be cutting your planks during a hot afternoon, letting them sit outside overnight in the cool air and then installing them the next morning, and you will notice a certain amount of contraction. The best way to minimize this problem is to fasten your planks after cutting as soon as possible.

## 01 HOMY WPC

## Read All Section Before You Install

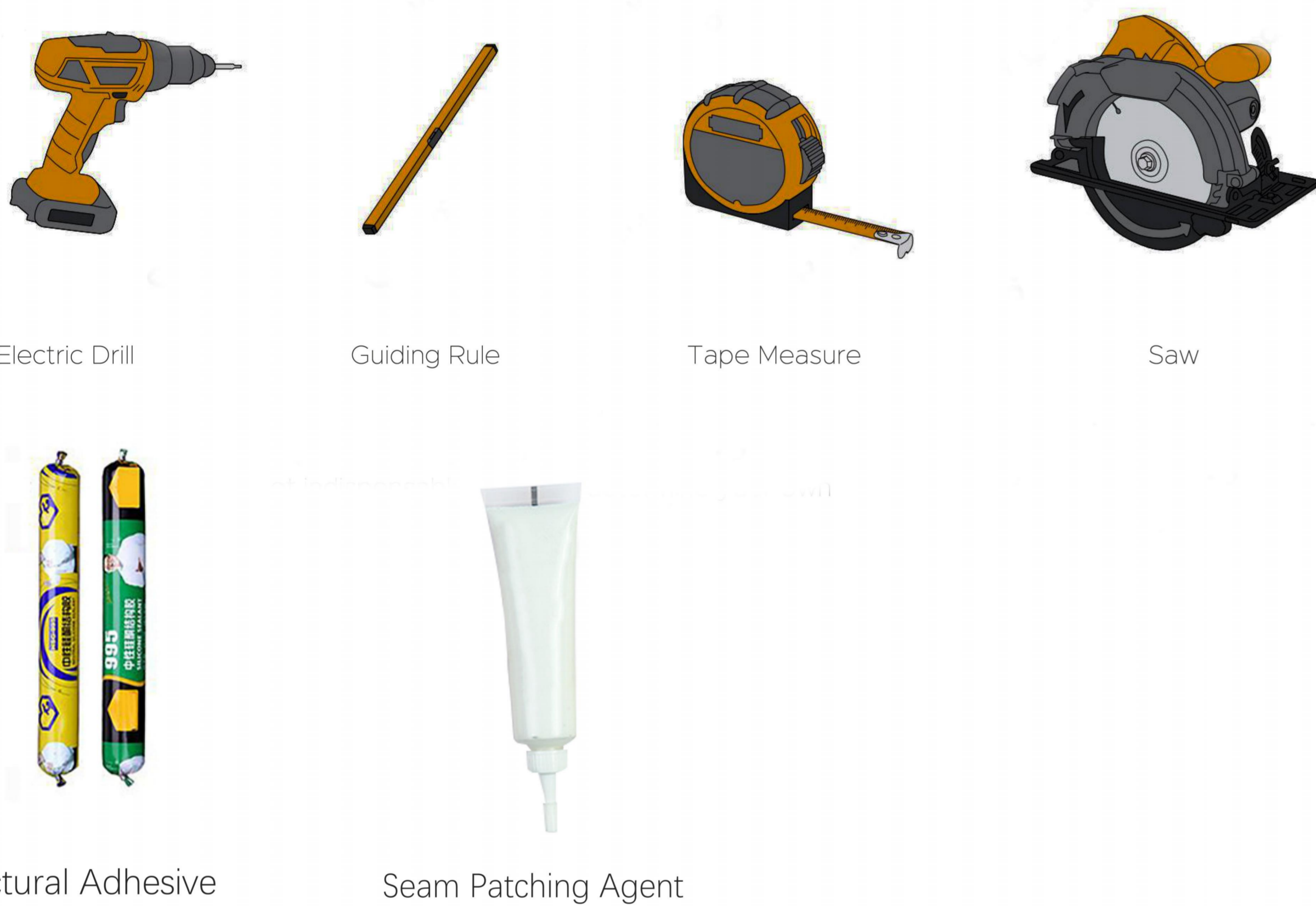
To get latest information, please visit our website: [www.homywpc.com](http://www.homywpc.com)

### Environment

You need a clean, smooth, flat and strong surface to install HOMY products. Make sure your plans meet local building codes before installing any type of plans if installation is not that urgent.

### Tools

The tools you need for this installation are illustrated below:



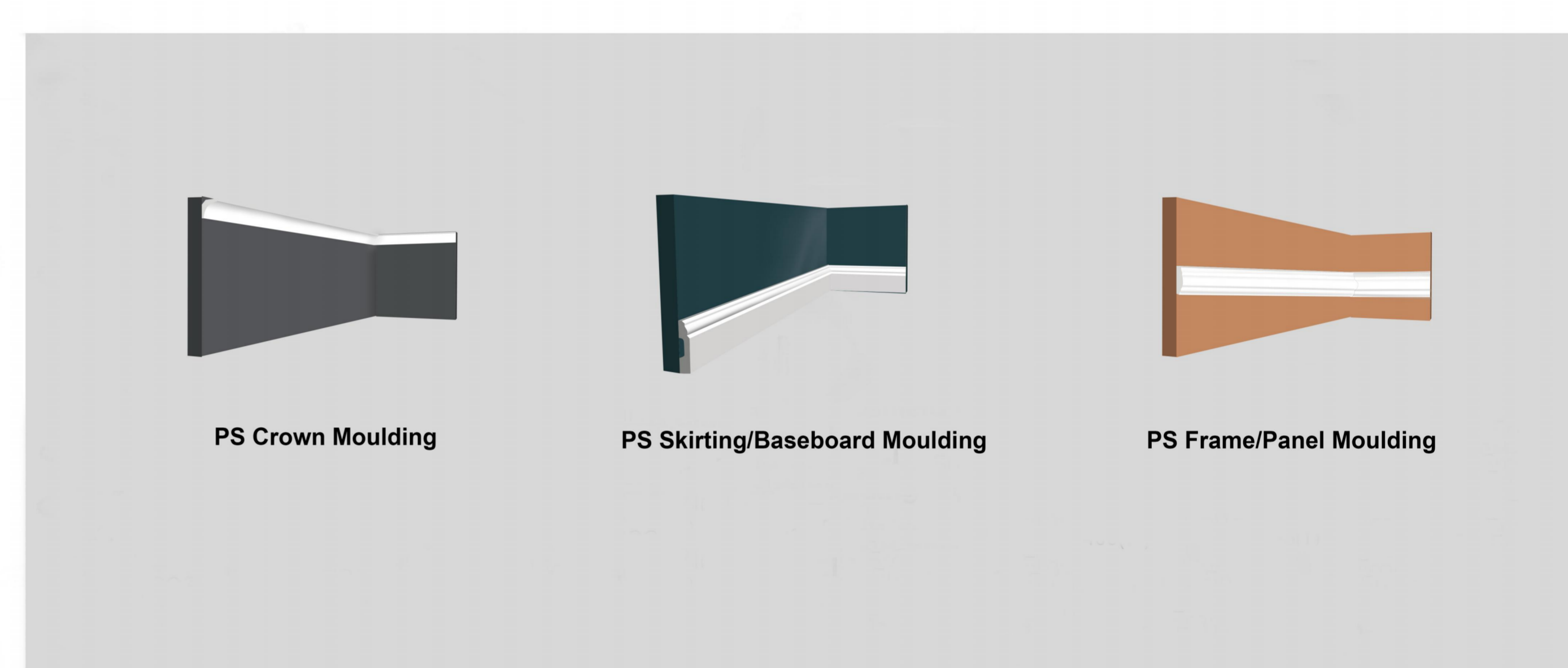
Electric Drill      Guiding Rule      Tape Measure      Saw  
Structural Adhesive      Seam Patching Agent

## 02 HOMY WPC

## Read All Section Before You Install

To get latest information, please visit our website: [www.homywpc.com](http://www.homywpc.com)

### Profiles



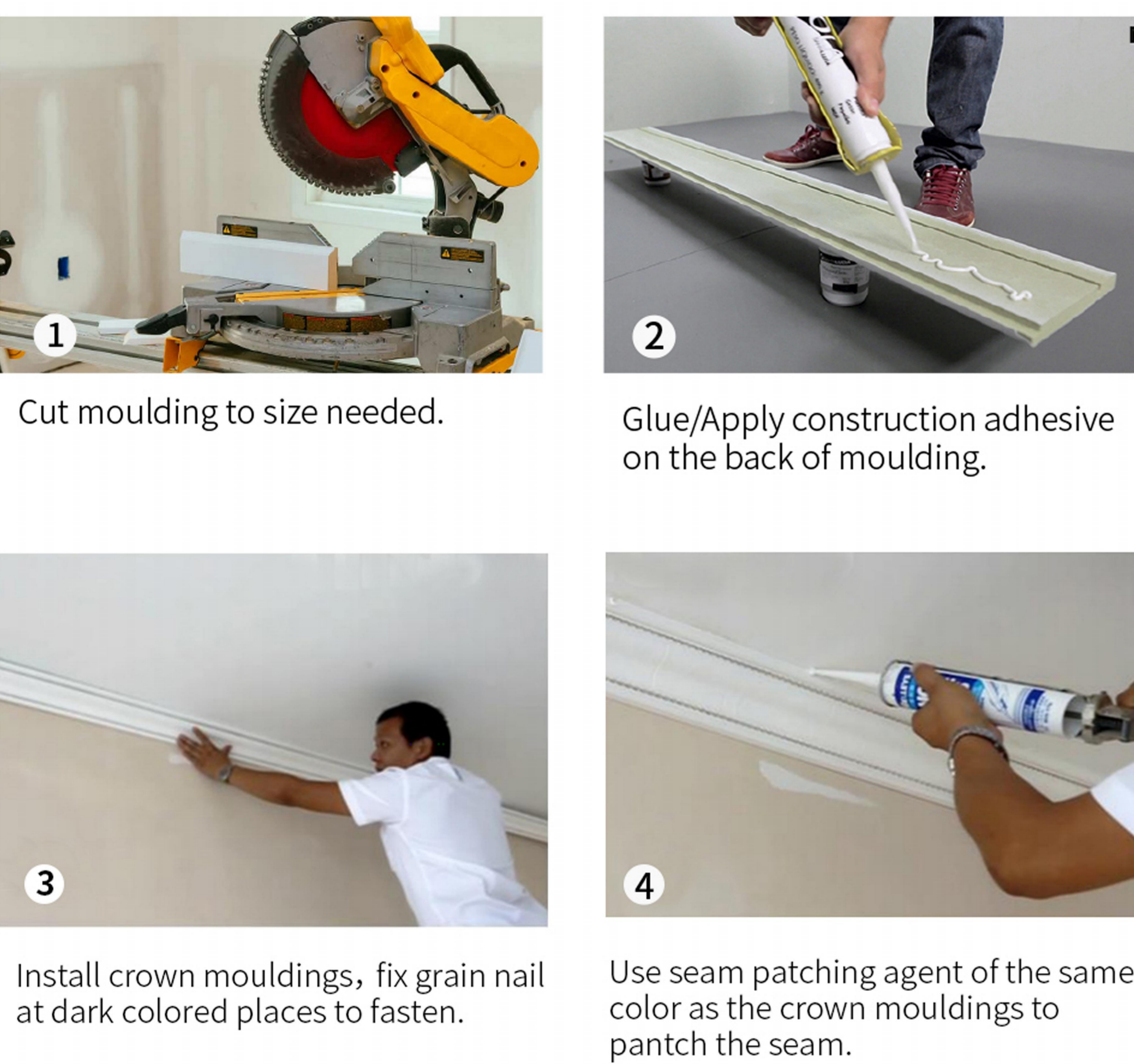
### PS Moulding Advantage



## 03 HOMY WPC

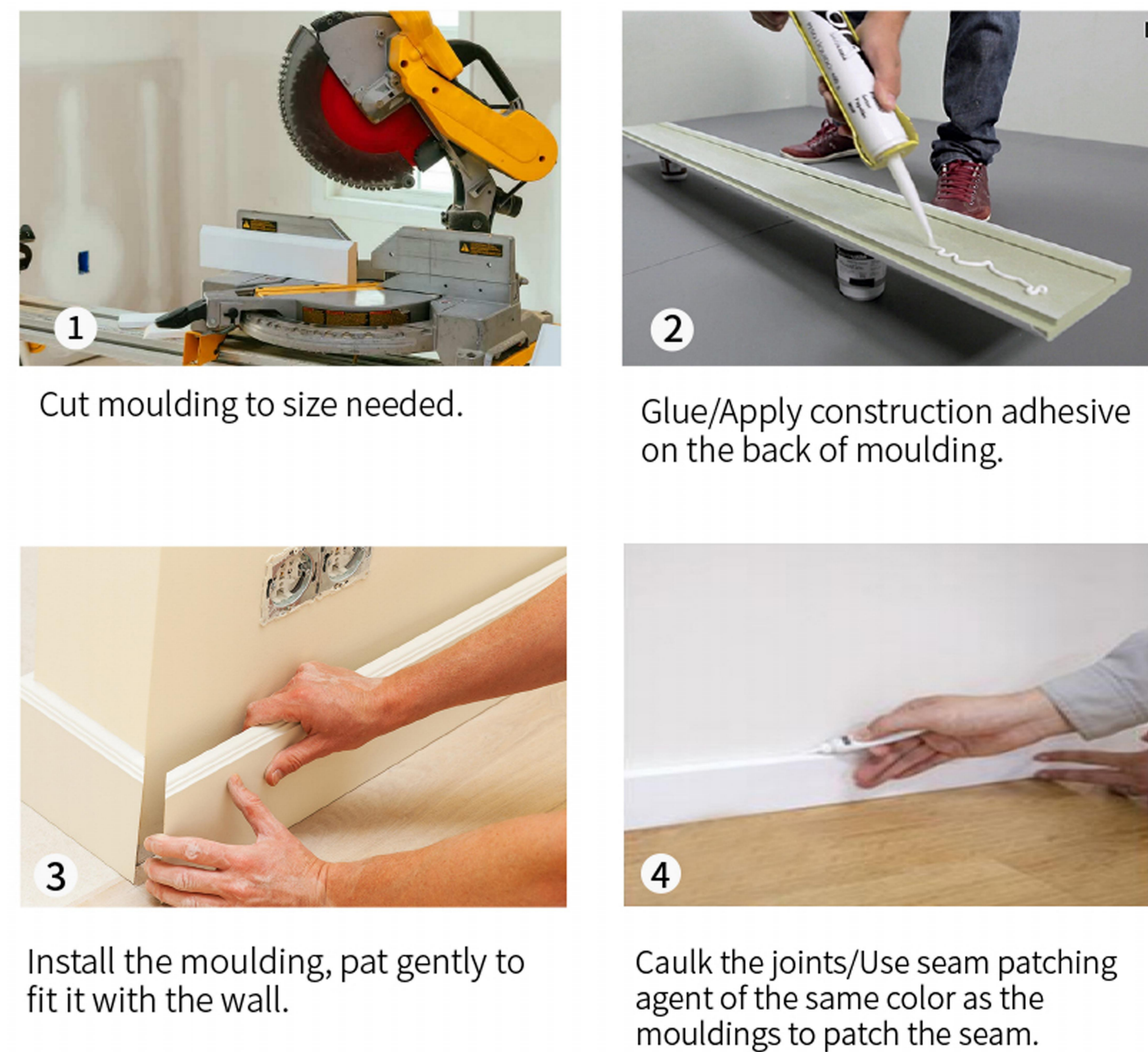
## Installation Process

### 1. PS Crown Installation Moulding



## 04 HOMY WPC

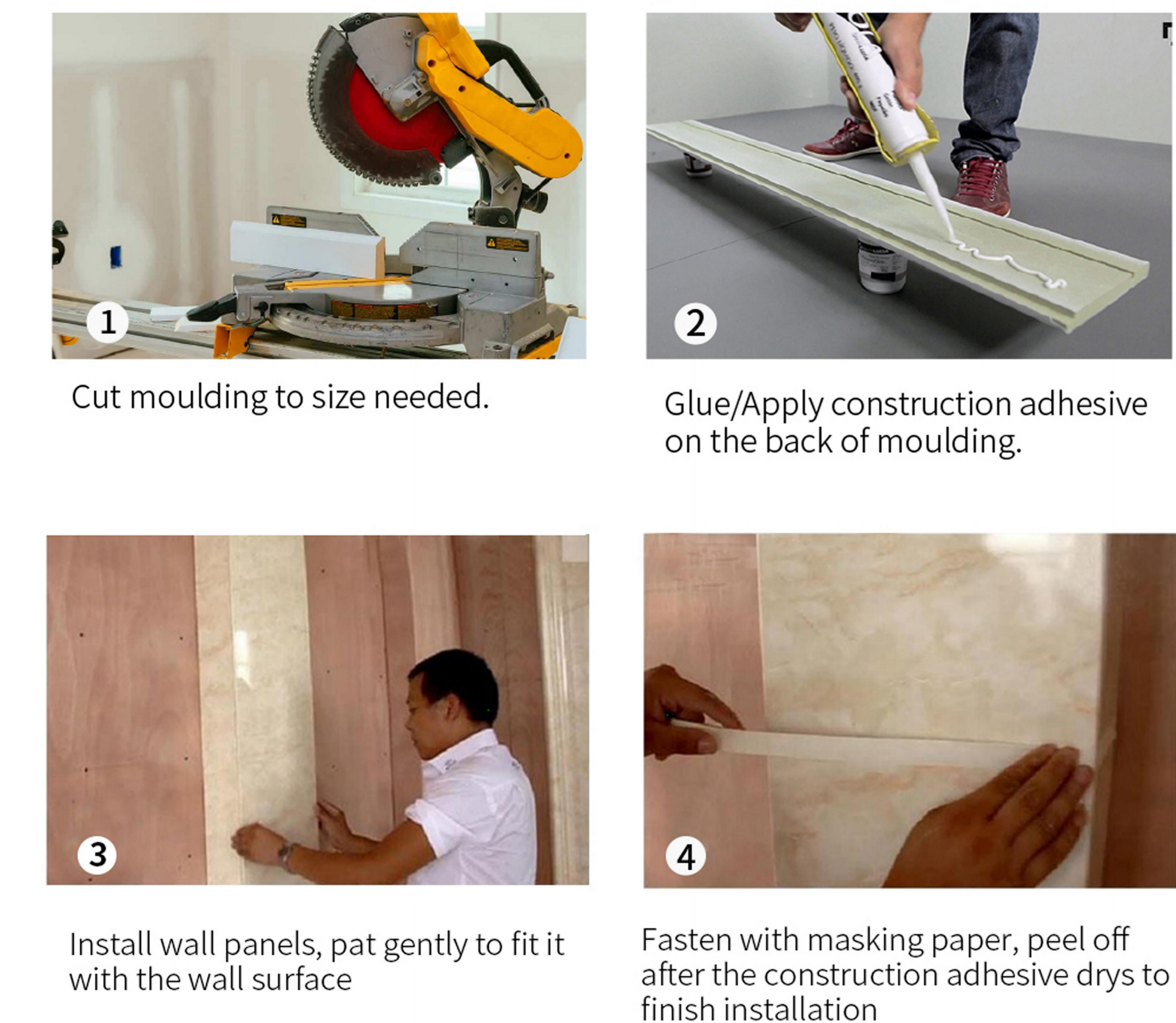
### 2. PS Skirting/Baseboard Installation Moulding



## 05 HOMY WPC

## Installation Process

### 3. PS Frame/Panel Installation Moulding



## 06 HOMY WPC

