

HOMY WPC

One-Stop WPC Products Supplier

HOLLOW WPC/SPC WALL PANEL



What is WPC ?

WPC (Wood Plastic Composite) is extruded thermoplastic composite made of polyethylene and natural wood fiber. Wood plastic composite is more environmentally friendly and requires less maintenance than the alternatives of solid wood. WPC is resistant to cracking and splitting, it is a material that can be molded with or without simulated wood grain details.



Strength and Durability

Unlike timber, our boards retain their strength and durability throughout their life.



No Rotting or Warping

A unique material composition resistant to the damaging effects of moisture build-up.



Eco-Friendly

A long-lasting material composed of a blend of recycled plastic and wood fibres.



No Splintering

The material composition ensures long-term safety and assurance.



25 Year Residential Warranty

High-quality, long-lasting products with a 25-year warranty.



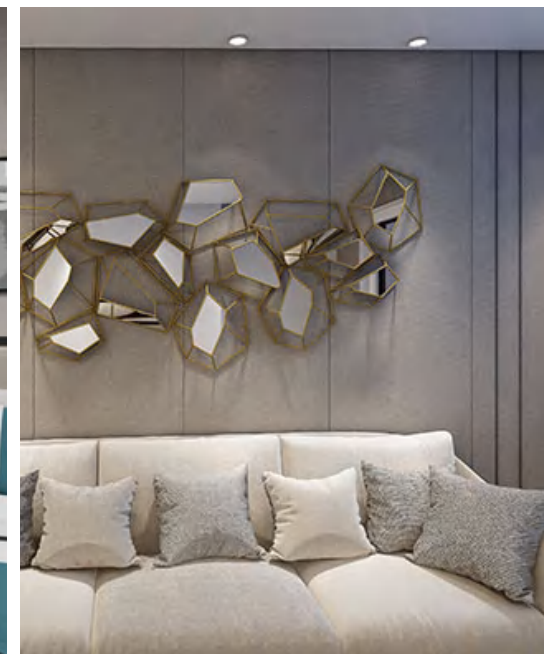
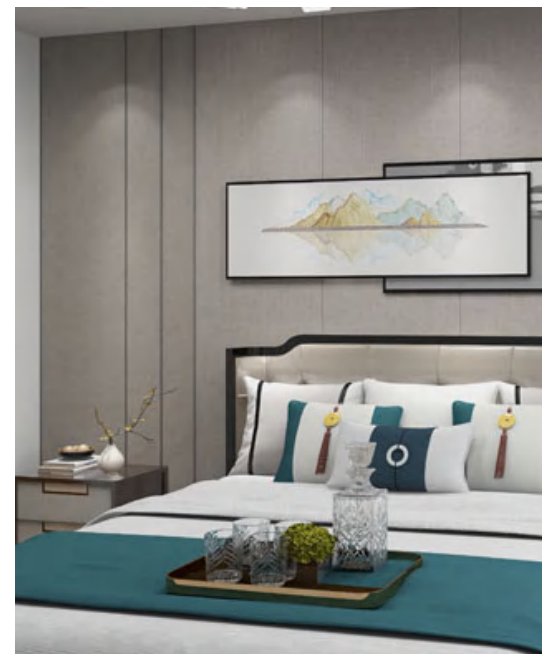
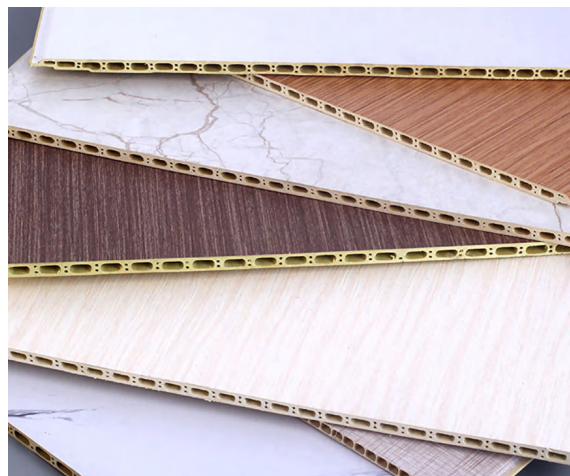
Very Low Maintenance

All our boards are hard-wearing and easy to maintain.



HOLLOW WPC WALL PANEL

- Hotels
- Commercial Buildings
- Restaurants
- Home Kitchen
- Schools
- Hospital





Homy Indoor Hollow WPC Wall Panel

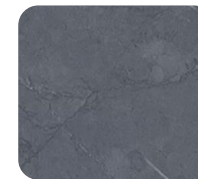
Homy Indoor WPC Wall Panel is with beautiful surface and can create a more harmonious and fashionable living space.

Material	Wood Plastic Composite
Size(mm)	400(W)*7(T), 400(W)*8(T), 400(W)*9(T), 600(W)*8(T)
Length	2800mm(9.186ft), 2900mm(9.514ft) or customized
Cross Section Shape	Plum Blossom Hole, Double Round Hole
Color	Wood Texture, Stone Texture, Cloth Pattern, Wallpaper Texture, Pure Color, etc.
Advantage	Waterproof, Fireproof, Anti-corrosion, Anti-insect, Easy & fast installation, Eco-friendly.
Applications	Hotels, Commercial Buildings, Restaurants, Hospital, Schools, Home Kitchen, Bathroom, etc.

Finished WPC Panel Colors



RF081 Cement Grey 2



RF019: Rock Grain 2



RF016: Marble White



RF071: White Cloth



RF081: Morandi 2



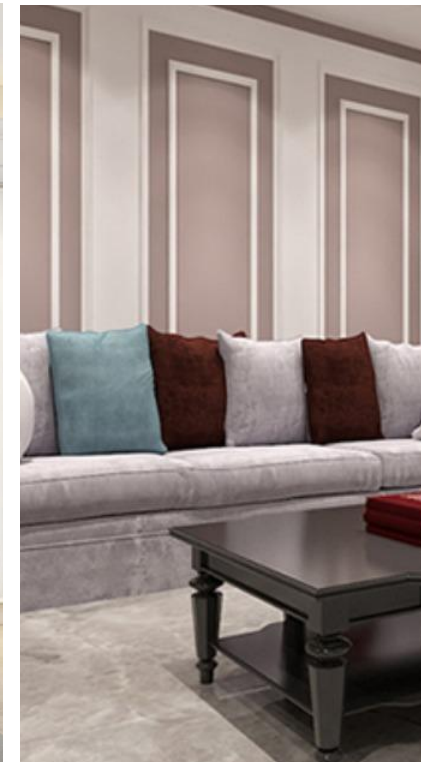
RF072: Linen Grain 1



RF075: Golden Cloth

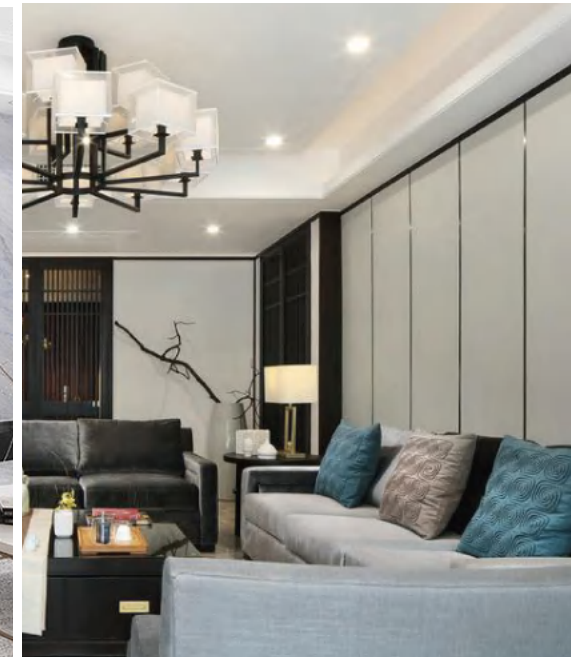


RF082: Morandi 3



HOLLOW SPC WALL PANEL

- Hotels
- Commercial Buildings
- Restaurants
- Home Kitchen
- Schools
- Hospital





Homy Indoor SPC Wall Panel

Homy Indoor SPC Wall Panel is water-proof, low maintenance, sound insulation, insect resistance and eco-friendly.

Material	PVC resin, Calcium, Chemical Additives
Size(mm)	400(W)*6(T), 400(W)*7(T), 400(W)*8(T), 400(W)*9(T), 600(W)*8(T)
Length	2800mm(9.186ft), 2900mm(9.514ft) or customized
Cross Section Shape	Round Hole, Oval Hole, New Round Hole
Color	Wood Texture, Stone Texture, Cloth Pattern, Wallpaper Texture, Pure Color, etc.
Advantage	Waterproof, Fireproof, Anti-corrosion, Anti-insect, Easy & fast installation, Eco-friendly.
Applications	Hotels, Commercial Buildings, Restaurants, Hospital, Schools, Home Kitchen, Bathroom, etc.

Finished SPC Panel Colors



RF081: Cement Grey 2



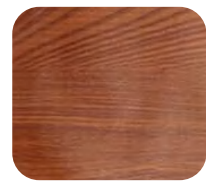
RF018: Rock Grain 1



RF026: Beige Oak



RF061: Cement Grey 1



RF042: Red Padauk



RF047: Peech Wood



RF048: Camphor Wood



RF053: European Walnut

V Groove vs Square Edge



Installation Accessories



I Shape Molding



Convex Shape Molding



80 Frame Line



100 Top Line



L Skirting



60 Decoration Line



Concave Line



100 Skirting



60 Frame Line



35 Decoration Line

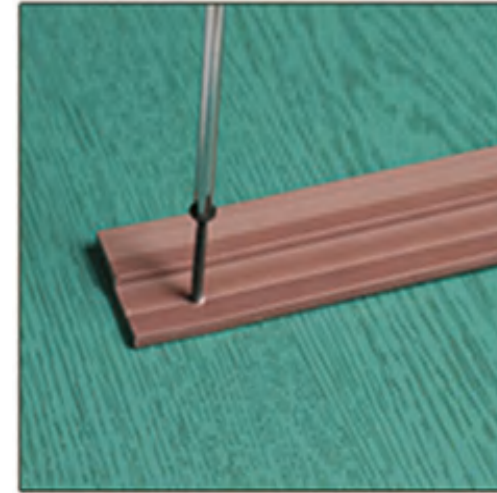
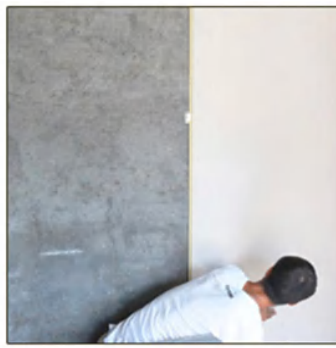


Concave Shape Molding



Double I Shape Molding (Light Stripe)

Installation Process



1. Install the wall panels on the wall in turn with clips or gun nails

2. Install the panels accessories on the places where accessories are needed.